



UNIVERSITÀ POLITECNICA DELLE MARCHE  
Repository ISTITUZIONALE

Control of host mitochondria by bacterial pathogens

This is the peer reviewed version of the following article:

*Original*

Control of host mitochondria by bacterial pathogens / Marchi, S.; Morroni, G.; Pinton, P.; Galluzzi, L.. - In: TRENDS IN MICROBIOLOGY. - ISSN 0966-842X. - 30:5(2022), pp. 452-465. [10.1016/j.tim.2021.09.010]

*Availability:*

This version is available at: 11566/294434 since: 2024-04-24T12:47:07Z

*Publisher:*

*Published*

DOI:10.1016/j.tim.2021.09.010

*Terms of use:*

The terms and conditions for the reuse of this version of the manuscript are specified in the publishing policy. The use of copyrighted works requires the consent of the rights' holder (author or publisher). Works made available under a Creative Commons license or a Publisher's custom-made license can be used according to the terms and conditions contained therein. See editor's website for further information and terms and conditions.

This item was downloaded from IRIS Università Politecnica delle Marche (<https://iris.univpm.it>). When citing, please refer to the published version.

note finali coverpage

(Article begins on next page)

22 July 2024

# Control of host mitochondria by bacterial pathogens

Saverio Marchi<sup>1,\*</sup>, Gianluca Morroni<sup>2</sup>, Paolo Pinton<sup>3</sup>, and Lorenzo Galluzzi<sup>4,5,6,7,8,\*</sup>

<sup>1</sup>Department of Clinical and Molecular Sciences, Marche Polytechnic University, Ancona, Italy; <sup>2</sup>Department of Biomedical Sciences & Public Health, Marche Polytechnic University, Ancona, Italy; <sup>3</sup>Department of Medical Sciences, Section of Experimental Medicine, Laboratory for Technologies of Advanced Therapies, University of Ferrara, Ferrara, Italy; <sup>4</sup>Department of Radiation Oncology, Weill Cornell Medical College, New York, NY, USA; <sup>5</sup>Sandra and Edward Meyer Cancer Center, New York, NY, USA; <sup>6</sup>Caryl and Israel Englander Institute for Precision Medicine, New York, NY, USA; <sup>7</sup>Department of Dermatology, Yale School of Medicine, New Haven, CT, USA; <sup>8</sup>Université de Paris, Paris, France.

\*Correspondence to: Saverio Marchi ([s.marchi@univpm.it](mailto:s.marchi@univpm.it)) or Lorenzo Galluzzi ([deadoc80@gmail.com](mailto:deadoc80@gmail.com))

**Running title:** Bacterial regulation of host mitochondria

**Key Words:** autophagy; *Listeria monocytogenes*; mitochondria-associated ER membranes; *Mycobacterium tuberculosis*; oxidative phosphorylation; regulated cell death.

## **Abstract**

Mitochondria control various processes that are integral to cellular and organismal homeostasis, including  $\text{Ca}^{2+}$  fluxes, bioenergetic metabolism and cell death. Perhaps not surprising, multiple pathogenic bacteria have evolved strategies to subvert mitochondrial functions in support of their survival and dissemination. Here, we discuss non-immunological pathogenic mechanisms that converge on the ability of bacteria to control the mitochondrial compartment of host cells.

## Introduction

Despite originating in the context of an endosymbiotic relationship >1.45 billion years ago, modern mitochondria remain at the very center of eukaryotic life as they control a variety of cellular processes that are fundamental for the preservation of both cellular and organismal homeostasis [1,2]. Mitochondria are structurally delimited by two membranes, which delineate an inner mitochondrial matrix and an intermembrane space (IMS). The mitochondrial matrix houses 2-10 copies of a small (approximately 16,568 base pairs in humans) circular genome generally referred to as mitochondrial DNA (mtDNA) as well as (1) a functional machinery for protein synthesis, and (2) numerous enzymes involved in multiple cellular functions (see below). The inner mitochondrial membrane (IMM) forms pronounced invaginations called cristae, resulting in a considerable increase in IMM surface area that is instrumental for the mitochondria to synthesize large amounts of ATP via oxidative phosphorylation (OXPHOS). Moreover, mitochondria are intimately involved in the regulation of intracellular  $\text{Ca}^{2+}$  fluxes, and contain a refined molecular machinery that precipitates regulated cell death (RCD) via apoptosis or **mitochondrial permeability transition (MPT)**-dependent regulated necrosis [3]. Finally, mitochondria have acquired the ability to emit and decode molecular signals elicited by infection and other stress conditions, constituting one of the first lines of cellular defense against both viral and bacterial pathogens [4]. Thus, various pathogenic organisms that colonize the intracellular microenvironment have evolved strategies to govern the mitochondrial functions of host cells in support of their own survival, replication and dissemination (**Table 1**).

While the mechanisms through which bacterial pathogens inhibit innate immune signaling by host cells in support of immunoevasion have been recently discussed in detail [5] (**Box 1**), a unified and updated overview of the non-immune mitochondrial processes that bacteria

subvert to their own benefit is missing. Here, we critically summarize the ability of pathogenic bacteria to sabotage bioenergetic metabolism,  $\text{Ca}^{2+}$  fluxes, as well as **mitophagy** and apoptotic cell death by targeting the mitochondria of host cells.

## Bioenergetic metabolism

In normoxic conditions, most eukaryotic cells harness glycolysis to convert glucose into pyruvate, which enters the mitochondria to generate acetyl-CoA and reducing equivalents via the **tricarboxylic acid (TCA) cycle**. Such reducing equivalents are then oxidized to produce 30-36 ATP molecules (per glucose molecule) via OXPHOS. Conversely, in hypoxic environments, eukaryotic cells resort to the glycolytic conversion of glucose into lactate (which provides only 2 ATP molecules per glucose molecule, but does not require molecular oxygen as OXPHOS does). In many cases, bacterial infection is accompanied by a global metabolic rewiring from OXPHOS to glycolysis that may be detrimental to invading pathogens [6]. As an example, phagocytic cells exposed to lipopolysaccharides (LPS) experience a robust inhibition of the TCA cycle coupled with the accumulation of some of its intermediates, such as succinate and itaconate, in support of glycolytic metabolism and lactate production [7]. Besides regulating the emission of pro-inflammatory signals by infected macrophages [8], itaconate strongly inhibits bacterial isocitrate lyase, hence limiting the growth of multiple pathogens, such as *Mycobacterium tuberculosis* and *Salmonella enterica* [9]. Of note, efficient OXPHOS is generally associated with mitochondrial elongation [10], suggesting that LPS-dependent inhibition of the TCA cycle may also benefit invading pathogens indirectly, as a consequence of altered mitochondrial dynamics [11] (see below).

Irrespective of this possibility, other pathogens such as *Pseudomonas aeruginosa* can proliferate by harnessing succinate, which accumulates in the airway as a result of impaired mitochondrial activity driven by CF transmembrane conductance regulator (*CFTR*) mutations [12]. Similarly, *Brucella abortus* disrupts mitochondrial metabolism and OXPHOS in host cells to favor glycolysis, as it can utilize lactate for proliferating [13]. While a similar trophic pathway has been proposed for *M. tuberculosis* [14], accurate metabolic assessments suggest

that *M. tuberculosis* does not shift host cell metabolism towards glycolysis, but instead establishes an ATP-depleted quiescent state (*i.e.*, suppressed OXPHOS coupled with low glycolytic rates) and harnesses fatty acid intake for survival [15]. This bioenergetic rewiring appears to be sustained by the production of ketone bodies coupled to the accumulation of lipid droplets in infected cells [16], leading to the acquisition of the pathognomonic “foamy phenotype” associated classically with *M. tuberculosis* infection.

Intracellular bacteria such as *Chlamydia trachomatis* actively boost OXPHOS, not only as they favor mitochondrial fusion [17], but also as they ensure elevated glucose intake from the extracellular microenvironment [18], ultimately supporting bacterial proliferation as a consequence of abundant ATP production. Interestingly, such an effect may originate from Toll-like receptor 2 (TLR2) activation by bacterial lipopeptides, which appear to sustain OXPHOS in the context of upregulated glycolysis. A concomitant increase in OXPHOS and glycolysis has also been observed also upon *Staphylococcus aureus* infection [19], in the absence of major changes in mitochondrial dynamics (at least in the early phases of infection) [20]. However, such a response does not only favor the survival of invading pathogens as a result of high ATP levels, but also supports innate immune signaling in both immune (*i.e.*, monocytes) [19] and non-immune (*i.e.*, keratinocytes) cells [21].

Taken together, these observations exemplify the co-evolution of bacterial vs. host (immune) metabolic responses, indicating as invading pathogens rapidly adapt to bioenergetic alterations to their own survival (**Fig. 1**).

## Ca<sup>2+</sup> fluxes

Alterations of Ca<sup>2+</sup> signalling frequently contribute to bacterial pathogenicity, as demonstrated by the fact that numerous bacterial toxins evoke intracellular Ca<sup>2+</sup> oscillations [22]. While increased cytosolic Ca<sup>2+</sup> levels are normally a consequence of influx from the extracellular milieu or opening of reticular stores, Ca<sup>2+</sup> ions cross the outer mitochondrial membrane (OMM) through the voltage-dependent anion channels (VDACs) and accumulate at large amounts inside the mitochondrial matrix due to (1) the physical proximity of the mitochondria to the endoplasmic reticulum (ER); (2) the negative electrochemical potential established across the IMM, which acts as a driving force for Ca<sup>2+</sup> entry; and (3) the presence of a regulated Ca<sup>2+</sup>-permeable channel, the mitochondrial calcium uniporter (MCU) complex [23,24].

Bacteria-driven cytosolic Ca<sup>2+</sup> elevations have been associated with RCD via MPT-driven necrosis downstream of mitochondrial Ca<sup>2+</sup> overload and consequent opening of the **permeability transition pore complex (PTPC)** (see below) [25]. Both *S. aureus* and the atypical fish pathogen *Mycobacterium fortuitum* appear to proficiently initiate this cascade of events, but while the latter has been suggested to drive mitochondrial Ca<sup>2+</sup> overload by favoring the assembly of **mitochondria-associated ER membranes (MAMs)**, the implication of MAMs in mitochondrial Ca<sup>2+</sup> accumulation elicited by *S. aureus* remains to be established [26,27]. *Streptococcus pneumoniae* also causes massive mitochondrial Ca<sup>2+</sup> entry and collapse of the electrochemical gradient, potentially leading to PTPC activation [28]. However, rather than promoting RCD, mitochondrial Ca<sup>2+</sup> overload in cells infected by *S. pneumoniae* appears to drive innate immune signaling via the release of mtDNA into the cytosol [28-30], pointing to the involvement of hitherto unidentified RCD-delaying factors for optimal *S. pneumoniae* pathogenicity (see below). Indeed, while an excessively rapid



activation of RCD in host cells (prior to pathogen replication) is detrimental to invading bacteria, late RCD (upon pathogen replication) may be advantageous as it favors dissemination. In line with this notion, early signs of mitochondrial dysfunction have been documented upon *Shigella flexneri* infection, partially linked to mitochondrial  $\text{Ca}^{2+}$  elevations and PTPC opening [31]. However, *S. flexneri* actively prevents premature RCD through the type 3 secretion system (T3SS) effector IpgD, which inhibits  $\text{Ca}^{2+}$  release from the ER by targeting inositol 1,4,5 trisphosphate receptor ( $\text{IP}_3\text{R}$ ) channels [32,33].

Altered mitochondrial  $\text{Ca}^{2+}$  homeostasis also supports the pathogenicity of various bacteria irrespective of active RCD control [34]. Indeed, moderate increases in mitochondrial  $\text{Ca}^{2+}$  levels promote bioenergetic metabolism including ATP production [23,24], which may reasonably sustain bacterial growth during prolonged infection. In line with this notion, shortly after infection, *Listeria monocytogenes* drives listeriolysin O (LLO)-dependent cytosolic  $\text{Ca}^{2+}$  elevations from both extracellular and intracellular sources [35], rapidly evolving in transient mitochondrial  $\text{Ca}^{2+}$  accumulation via MCU [36] and acetyl-CoA production via the  $\text{Ca}^{2+}$ -sensitive pyruvate dehydrogenase (PDH) complex [37]. In turn, accumulating acetyl-CoA favors the acetylation of rubicon autophagy regulator (RUBCN), a key regulator of a non-canonical form of autophagy with antibacterial effects termed **LC3-associated phagocytosis (LAP)** [38,39]. Importantly, abolition of mitochondrial  $\text{Ca}^{2+}$  uptake in myeloid cells via *MCU* deletion improves LAP and bacterial neutralization, demonstrating that *L. monocytogenes* safeguards its intracellular growth in a  $\text{Ca}^{2+}$ -dependent manner [36].

Taken together, these observations highlight various mechanisms of pathogenicity involving the ability of invading bacteria to control mitochondrial  $\text{Ca}^{2+}$  fluxes in host cells. This can be achieved by altering the composition of the MCU complex, which comprises both channel-forming and regulatory subunits [40], or by targeting mitochondrial  $\text{Ca}^{2+}$  efflux systems [41].

In the case of *L. monocytogenes*, increased levels of the MCU regulator mitochondrial calcium uptake 1 (MICU1) [42] appear to enable efficient mitochondrial  $\text{Ca}^{2+}$  entry upon release from reticular stores, achieving not only a boost in mitochondrial metabolism but also a protection from excessive cytosolic  $\text{Ca}^{2+}$  levels that reflects the ability of MICU1 to regulate the  $\text{Ca}^{2+}$  threshold for MCU opening [43]. Mitochondrial  $\text{Ca}^{2+}$  elevations could also be obtained by altering the activity of solute carrier family 8 member B1 (SLC8B1, best known as NCLX) [42], which is regulated at post-transcriptional level [44]. However, to the best of our knowledge, no invading pathogen has been formally demonstrated to control mitochondrial  $\text{Ca}^{2+}$  homeostasis in host cells via NCLX. Finally, mitochondrial  $\text{Ca}^{2+}$  fluxes can be elicited by altering the  $\text{IP}_3\text{R}$ -dependent coupling of the ER and mitochondria at MAMs. This mechanism, which is also expected to prevent autophagy-dependent pathogen clearance [45], has been documented in cells infected by *C. trachomatis*, which can activate  $\text{IP}_3\text{Rs}$  via the inclusion membrane protein MrcA [46].

In summary, the key role of mitochondrial  $\text{Ca}^{2+}$  at the interface between bioenergetic metabolism and RCD regulation [47] stands out as an ideal target for manipulation by bacterial pathogens at different stages of infection (**Figure 2**). In turn, counteracting the strategies that bacteria have evolved to control the amplitude and kinetics of mitochondrial  $\text{Ca}^{2+}$  fluxes may represent a promising strategy for the development of novel antimicrobials.

## **Mitochondrial dynamics**

Mitochondria undergo continuous **fusion** and **fission** events, which are tightly regulated at the molecular level. While mitochondrial elongation is mainly promoted by mitofusins (MFNs) at the OMM and OPA1 mitochondrial dynamin like GTPase (OPA1) at the IMM, fission is generally initiated by the translocation of the cytosolic factor, dynamin 1 like (DNM1L, best known as DRP1) to the OMM, where it marks the site of mitochondrial division. Multiple

bacterial species remodel the mitochondrial network, generally as they promote fission in support of RCD during the late infection phases [5]. Indeed, the pro-apoptotic factor BCL2 associated X, apoptosis regulator (BAX) and BCL2 antagonist/killer 1 (BAK1) [48] also recruit DRP1 to the OMM to promote fragmentation [49]. Specifically, these molecular events underlie host cell death induced by the vacuolating cytotoxin A (VacA) of *Helicobacter pylori* [50] as well as the secreted porin B (PorB) of *Neisseria gonorrhoea* [51-53]. Along similar lines, LLO from *L. monocytogenes* is responsible for mitochondrial fragmentation and the concomitant bioenergetics crisis that characterize the early phase of infection [54]. However, this occurs through a non-canonical DRP1-independent mechanism [55] that involves (at least in part) mitochondrial contact site and cristae organizing system subunit 10 (MICOS10) [42].

However, mitochondrial fission does not systematically correlate with apoptosis initiation, but rather participates in different pathophysiological processes, including metabolic adaptation [56] and the control of redox homeostasis [57]. For instance, a type 4 secretion system (T4SS) effector protein from *Legionella pneumophila* targets mitochondria and promotes rapid DRP1-dependent fission, but not overt RCD, initiating a series of mitochondrial alterations that ensure bacterial replication [58]. These might include reduced reactive oxygen species (ROS) generation [59] and chronic 5' AMP-activated protein kinase (AMPK) activation [60], which is also involved in the fragmentation-coupled mitophagy [61,62]. Moreover, deletion of mitofusin 2 (*MFN2*), which participates in mitochondrial fusion, from macrophages results in extensive mitochondrial fragmentation, altered respiration and reduced ROS levels, but no overt RCD, ultimately allowing for the survival and dissemination of both *L. monocytogenes* and *M. tuberculosis* [63]. A similar pathway of ROS inhibition has been documented in methicillin-resistant *S. aureus* (MRSA) [64]. In this latter case, however, the physical

dissociation between ROS-producing mitochondria and cytosolic pathogens appears to be involved in pathogenicity [64].

These observations delineate a mechanism whereby mitochondrial fission and subcellular re-localization limit ROS generation, either by facilitating the degradation of ROS-producing mitochondria by mitophagy [65], as observed for *Listeria spp.* [66], or by cooperating with other alterations including metabolic reprogramming (see above), ultimately setting up ideal conditions for bacterial growth. At least apparently at odds with this notion, *C. trachomatis* indirectly promotes mitochondrial elongation upon inhibiting fission via specific microRNAs (miRNAs) [67], ultimately boosting ATP production to sustain proliferation in epithelial cells [17]. Such a metabolic alteration is accompanied by an increase in ROS levels [68], but *C. trachomatis* exploits them for activating caspase 1 (CASP1) in further support of growth [69].

Specific cell types including macrophages promptly react to bacterial invasion by MFN1/MFN2-dependent fusion, a process that is required for optimal activation of defense mechanisms including autophagy and the secretion of antimicrobial cytokines [63,70,71]. Consistent with this notion, loss of DRP1 potentiates innate immune defenses driven by mitochondrial species such as ROS and mtDNA [72] (**Box 1**). Similar observations have also been made in adipocytes infected by the eukaryotic pathogen *Toxoplasma gondii*, although in this case the protective effects of mitochondrial fusion originate from the ability of elongated mitochondria to efficiently use fatty acids and hence restrict their availability for the pathogen [73]. Taken together, these observations suggest that most (but not all) bacteria harness mitochondrial fission as a strategy to control host mitochondria in support of proliferation and dissemination.

MAMs represent key hubs where mitochondrial dynamics are regulated [74], at least in part reflecting their versatility and multi-functional nature [75]. Suggesting that MAMs may also

be targeted by invading pathogens, Omp85 from *Neisseria spp.* controls lipid homeostasis in support of pathogenicity [76,77], and the human Omp85 human homolog SAMM50 sorting and assembly machinery component (SAMM50) actively participates in the regulation of MAM dynamics from the OMM [78,79]. Moreover, LegS2 (a T4SS effector from *L. pneumophila*) has been detected at both ER and mitochondrial membranes [80], indicating a putative MAM localization from which it might interfere with sphingolipid homeostasis and autophagy [81]. Yet another *L. pneumophila* effector (*i.e.*, Lpg1137) accumulates at MAMs to promote the degradation of the scaffold protein syntaxin 17 (STX17) and disrupt ER-mitochondria communication, ultimately inhibiting autophagy in support of pathogen survival [82]. Of note, *L. pneumophila* also secretes a factor commonly known as Legionella nucleotide carrier Protein (LncP) that integrates at the IMM to regulate ATP transport [83]. This event appears to contribute to pathogenicity at least in part by repressing autophagy [83]. In addition, *P. aeruginosa* actively inhibit autophagy in the context of cystic fibrosis, although in this case such an effect originates from the stabilization (rather than the destabilization) of ER-mitochondria contacts [84]. Whether this process involves quorum sensing (QS) molecules, which normally account for *Pseudomonas*-related mitochondrial dysfunctions [85,86], remains to be established.

Irrespective of these and other unsolved issues, mitochondrial dynamics and MAMs stand out as preferential targets for invading pathogens to survive and proliferate in host cells (**Fig. 3**), at least in part reflecting the central involvement of MAMs in autophagy regulation [87] and innate immune signaling (**Box 1**).

## Mitophagy and cell death

Autophagy and RCD are critical for the preservation of intracellular and organismal homeostasis [3], respectively, hence representing major targets for host cell control by pathogenic bacteria. Active RCD induction by invading pathogens normally ensues replication, implying that it occurs in the context of failed pathogen control by autophagic responses [88]. As mitochondria are crucial players in specific variants of autophagy (mitophagy) and RCD (mitochondrial apoptosis and MPT-driven regulated necrosis), bacteria have evolved several strategies to control these processes at the mitochondrial level.

Bacterial invasion generally drives a pronounced autophagic response that targets not only the pathogen itself (so-called xenophagy) but also mitochondria damaged by infection (mitophagy) [25]. These responses rely on a common molecular machinery, but involve specific **autophagy receptors** [89]. For instance, the T3SS of *P. aeruginosa* promotes mitochondrial damage coupled to the release of ROS and mtDNA that is actively contained by mitophagy [90]. Pointing to an antimicrobial activity for these responses, *P. aeruginosa* developed multiple mechanisms to inhibit autophagy in host cells [91]. Conversely, *L. monocytogenes* actively drives mitophagy via LLO to quench ROS production in infected macrophages, which not only favors cytosolic pathogen persistence [66], but also inhibits phagocytosis [92]. Of note, LLO-driven mitophagy results from the direct interaction between LLO and the receptor NLR family member X1 (NLRX1) independent of the canonical pathway mediated by PTEN induced kinase 1 (PINK1), and hence preferentially occurs in cells with high NLRX1 levels such as macrophages [66].

For several bacteria, optimal pathogenicity involves the temporal control of RCD in host cells to enable pathogen replication in the context of inhibited cell death, but ultimately facilitates cellular breakdown in support of pathogen dissemination. Different effectors from the T4SS

of *L. pneumophila* initially prevent apoptotic RCD by neutralizing BAX and BAK1 [93-95], or inducing the ATP synthase to operate in reverse mode [96] to preserve mitochondrial transmembrane potential and avoid mitochondrial collapse. Conversely, at later stages of infection, *L. pneumophila* actively drive BAK1-independent cell death to facilitate bacterial dissemination [97]. pORF5 from *C. trachomatis* also inhibits RCD by attenuating mitochondrial dysfunction, as evidenced by reduced BAX levels, quenched release of cytochrome c, somatic (CYCS) into the cytosol and enhanced activation of the cytoprotective protein BCL2 apoptosis regulator (BCL2) [98]. Interestingly, this effect appears to originate from the upregulation of high mobility group box 1 (HGMB1), a conserved protein involved in autophagy and apoptosis regulation [98].

*M. tuberculosis* is well known for its capacity to promote the death of host cells in support of dissemination. One of the major mechanisms underlying such ability converges on Bcl-2 family proteins, especially the pro-apoptotic factor BCL2 like 11 (BCL211, best known as BIM), which can be activated by the pathogen ESX-1 secretion system and ESAT-6 protein [99]. Moreover, several mycobacterial proteins localize to the mitochondrial matrix and drive apoptosis in host macrophages by promoting ROS generation [100]. In the latter case, RCD may occur via MPT-driven necrosis rather than apoptosis, as the PTPC is particularly sensitive to ROS elevations [101]. Moreover, instances of mixed RCD scenarios involving both apoptotic and necrotic components have been documented in the context of *S. aureus* infection [102,103]. Other bacteria have been shown to employ a range of mechanisms to promote mitochondrial RCD. These include *S. flexneri*, which drives RCD in host cells via invasion plasmid antigen D (IpaD) [104], as well as the extracellular bacteria *Acinetobacter baumannii* and the nosocomial pathogen *Stenotrophomonas maltophilia*, whose cytotoxicity involves the outer membrane protein A (OmpA) [20,105,106]. Similarly, outer membrane vesicles (OMVs) from *N. gonorrhoeae*, uropathogenic *Escherichia coli* and *P. aeruginosa*

have all been shown to drive mitochondrial RCD in macrophages upon depletion of MCL1 apoptosis regulator, BCL2 family member (MCL1) [53].

Taken together, these observations exemplify various strategies through which bacterial pathogens control mitophagy and RCD at the level of mitochondria (**Fig. 4**).



## Concluding remarks

Most, if not all, pathogenic bacteria have evolved a panel of strategies to control mitochondrial functions in host cells, largely reflecting the key position that mitochondria occupy in virtually all facets of the biology of modern eukaryotes [24]. It is tempting to speculate that the predisposition of bacteria to converge prevalently on mitochondria rather than other organelles, such as the ER or lysosomes, reflects the evolutionary origin of mitochondria. Indeed, mitochondria emerged from an endosymbiotic interaction between ancestral alpha proteobacteria (the evolutionary ancestors of modern Gram-negative bacteria) [107]. This implies that (at least some degree of) structural or functional homology between modern mitochondria and contemporary bacteria persisting throughout evolution may explain (at least some of the) interactions between mitochondrial component and pathogen factors. However, such a possibility does not directly account for the multipronged interactions between modern Gram-positive bacteria and eukaryotic pathogens with mitochondria. Thus, modern pathogens may simply have evolved strategies to control host mitochondria as a direct consequence of the robust evolutionary pressure existing on key processes that impinge on mitochondrial activity, including (but perhaps not limited to) RCD and innate immune signaling. Although other issues still remain open (*see Outstanding Questions*), the functional interactions between invading bacteria and host mitochondria stand out as key aspects of pathogenicity. Additional studies are needed to elucidate the therapeutic potential of drugs specifically conceived to disrupt such bacteria-mitochondria intersections.

**Conflict of interest statement.** L.G. has received research funding from Lytix Biopharma and Phosplatin, as well as consulting/advisory honoraria from Boehringer Ingelheim, AstraZeneca, OmniSEQ, Onxeo, The Longevity Labs, Inzen, and the Luke Heller TECPR2 Foundation. All other authors have no conflicts to disclose.

**Acknowledgements.** The figures have been created with BioRender.com. S.M. is supported by the Italian Ministry of Health (GR-2016-02364602), Nanoblend and local funds from Marche Polytechnic University (Ancona, Italy). P.P. is supported by the Italian Association for Cancer Research (AIRC, IG-23670), Telethon (GGP11139B), the Ministry of Education, University and Research - Progetti di Rilevante Interesse Nazionale (PRIN, 2017 E5L5P3) and local funds from the University of Ferrara. The L.G. lab is supported by a Breakthrough Level 2 grant from the US DoD BRCP (#BC180476P1), by the 2019 Laura Ziskin Prize in Translational Research (#ZP-6177, PI: Formenti) from the Stand Up to Cancer (SU2C), by a Mantle Cell Lymphoma Research Initiative (MCL-RI, PI: Chen-Kiang) grant from the Leukemia and Lymphoma Society (LLS), by a startup grant from the Dept. of Radiation Oncology at Weill Cornell Medicine (New York, US), by a Rapid Response Grant from the Functional Genomics Initiative (New York, US), by industrial collaborations with Lytix Biopharma (Oslo, Norway) and Phosplatin (New York, US), and by donations from Phosplatin (New York, US), the Luke Heller TECPR2 Foundation (Boston, US), Sotio a.s. (Prague, Czech Republic) and Onxeo (Paris, France).

### **Box 1. Innate immune signaling by mitochondria.**

The ability of cells to engage the immune system in response to stressful conditions, including (but not limited to) pathogenic challenges, is intimately associated with mitochondrial functions, thereby constituting a key link between intracellular and organismal homeostasis. For instance, mitochondrial derangements caused by infection can lead to the buildup of reactive oxygen species (ROS) and mitochondrial DNA (mtDNA) molecules in the cytoplasm, culminating with the activation of the NLR family pyrin domain containing 3 (NLRP3), NLR family CARD domain containing 4 (NLRC4) or absent in melanoma 2 (AIM2) inflammasome and consequent secretion of mature interleukin 1 beta (IL1B, best known as IL-1 $\beta$ ) and IL-18. Alternatively, oxidized mtDNA accumulating in the cytosol of infected cells can promote cyclic GMP-AMP synthase (CGAS) and stimulator of interferon response cGAMP interactor 1 (STING1) signaling, resulting in the initiation of NF- $\kappa$ B- and interferon regulatory factor 3 (IRF3)-dependent pro-inflammatory transcriptional programs. Moreover, the mitochondrial antiviral signaling protein (MAVS), a key signal transducer in various pathways that detect cytosolic double-stranded RNA to initiate antiviral responses based on type I interferon (IFN), is localized to the outer mitochondrial membrane (OMM). Finally, several mitochondrial components including mtDNA, transcription factor A, mitochondrial (TFAM) and the inner mitochondrial membrane (IMM)-restricted lipid cardiolipin mediate robust immunostimulatory signals once released in the extracellular environment, *de facto* operating as damage-associated molecular patterns (DAMPs) even in the absence of infectious challenges [4,108].

## Glossary

**Mitochondrial permeability transition (MPT).** Rapid alteration in the permeability of the inner mitochondrial membrane that causes a specific variant of regulated necrosis.

**Autophagy.** Evolutionary conserved process ensuring the removal of dispensable or cytotoxic cytosolic material through lysosomal degradation.

**Mitophagy.** A variant of autophagy that selectively targets permeabilized or otherwise dysfunctional mitochondria.

**Tricarboxylic acid (TCA) cycle.** A series of chemical reactions that converts acetyl-CoA into NADH and FADH<sub>2</sub> in support of oxidative phosphorylation and ATP production by mitochondria.

**Permeability transition pore complex (PTPC).** The multicomponent pore of the inner mitochondrial membrane responsible for mitochondrial permeability transition (MPT).

**Mitochondria-associated ER membranes (MAMs).** Specialized regions of the endoplasmic reticulum membrane that are physically and functionally connected to mitochondria.

**LC3-associated phagocytosis (LAP).** LC3-dependent process that enables the uptake and lysosomal degradation of extracellular pathogens and dead cell corpses.

**Fission.** Multistep process through which mitochondria split in support of replication or mitophagy.

**Fusion.** Multistep process through which mitochondria fuse in support of improved bioenergetic metabolism or mtDNA redistribution.

**Autophagy receptors.** Components of the autophagy machinery involved in the recognition of specific substrates destined to lysosomal degradation.

**Table 1. Control of mitochondrial functions by pathogens.**

<b>Pathogen</b>	<b>Bacterial factor(s)</b>	<b>Mitochondrial target(s)</b>	<b>Cellular response</b>	<b>Outcome</b>	<b>Ref.</b>
<i>Acinetobacter baumannii</i>	OmpA	DRP1	Mitochondrial fragmentation ROS production	Host cell death induction	[20]
<i>Brucella abortus</i>	-	-	Metabolic rewiring	Improved pathogen survival	[13]
<i>Chlamydia trachomatis</i>	pORF5	BAX BCL2	Limited CYCS release Apoptosis inhibition	Improved pathogen survival	[98]
	-	-	Metabolic rewiring	Improved pathogen survival	[18]
<i>Helicobacter pylori</i>	VacA	DRP1	Mitochondrial fission BAX activation	Host cell death induction	[50]
	VacA	-	Reduced BCL2 expression	Host cell death induction	[109]
<i>Legionella pneumophila</i>	Lpg1137	STX17	Autophagy inhibition	Improved pathogen survival	[82]
	SidF	BNIP3	BNIP3 inhibition	Improved pathogen survival	[93]
	MitF	DRP1	Mitochondrial fission Metabolic rewiring	Improved pathogen survival	[58]
	LncP	-	ATP transport	Improved pathogen survival	[83]
	VipD	-	$\Delta\psi$ loss CYCS release	Host cell death induction	[97]
	<i>Listeria monocytogenes</i>	LLO	NLRX1	Inhibition of ROS production Mitophagy inhibition	Improved pathogen survival
	LLO	MICOS10	Mitochondrial fission	Improved pathogen survival	[42,54]
<i>Mycobacterium tuberculosis</i>	ESX-1 Rv01654	BIM	Caspase activation	Host cell death induction	[99,110]
	Rv0674	mtDNA	ROS production Inhibition of ATP production	Improved pathogen survival	[100]
	Rv0694 ESAT-6	-	Metabolic rewiring	Improved pathogen survival	[14,16]
<i>Neisseria gonorrhoeae</i>	PorB	-	Ultrastructural defects	Host cell death induction	[51]
	PorB	-	$\Delta\psi$ loss CYCS release	Host cell death induction	[52]
	OMV	-	MOMP	Host cell death induction	[53]
<i>Pseudomonas aeruginosa</i>	T3SS	NLRC4 inflammasome	mtDNA release ROS production	Improved pathogen survival	[90]
	ExoS	-	Autophagy inhibition	Improved pathogen survival	[91]
	OMV	-	MOMP	Host cell death induction	[53]
<i>Shigella flexneri</i>	IpaD	-	Caspase activation	Host cell death induction	[104]
	-	BCL2	ROS production $\Delta\psi$ loss	Host cell death induction	[31]
<i>Staphylococcus aureus</i>	PVL	-	MPT Caspase activation	Host cell death induction	[103]
	Alpha-toxin	NRLP3 inflammasome	Separation of mitochondria from intracellular bacteria	Improved pathogen survival	[64]
	-	-	Metabolic rewiring	Improved pathogen survival	[21]
<i>Stenotrophomonas maltophilia</i>	OmpA	BAX	ROS production Intracellular $Ca^{2+}$ increase	Host cell death induction	[106]

**Abbreviations:**  $\Delta\psi$ , mitochondrial transmembrane potential; MOMP, mitochondrial outer membrane permeabilization; MPT, mitochondrial permeability transition; mtDNA, mitochondrial DNA; OMV, outer membrane vesicles; ROS, reactive oxygen species; T3SS, type 3 secretion system.

## Legends to Figures

**Figure 1. Bacterial control of mitochondrial metabolism in host cells.** *Brucella abortus* favors glucose uptake via plasma membrane glucose transporters (GLUTs) as it inhibits oxidative phosphorylation (OXPHOS), culminating with lactate accumulation in support of pathogen viability (A). *Pseudomonas aeruginosa* harnesses succinate accumulating as a result of impaired OXPHOS in cells with CF transmembrane conductance regulator (*CFTR*) mutations in support of colonization (B). *Mycobacterium tuberculosis* has been proposed to inhibit both glycolysis and OXPHOS and rely on the uptake of exogenous fatty acids for survival (black) as well as to divert glycolysis towards the production of ketone bodies (KBs) in support of fatty acid accumulation (red) (C). *Staphylococcus aureus* and *Chlamydia trachomatis* boost both glycolysis and OXPHOS to exacerbated intracellular ATP availability.

**Figure 2. Alterations of mitochondrial Ca<sup>2+</sup> homeostasis imposed by invading pathogens.** *Staphylococcus aureus*, *Streptococcus pneumoniae* and *Shigella flexneri* can all mobilize Ca<sup>2+</sup> ions from the endoplasmic reticulum (ER) via inositol 1,4,5 trisphosphate receptor (IP<sub>3</sub>R) channel, resulting in the accumulation of Ca<sup>2+</sup> in the mitochondrial matrix via voltage-dependent anion channel (VDACs) at the outer mitochondrial membrane (OMM) and the mitochondrial calcium uniporter (MCU) complex at the inner mitochondrial membrane (IMM). However, while *S. aureus* and *S. pneumoniae* do so in an accentuated manner, rapidly resulting in innate immune signaling via cytosolic mitochondrial DNA (mtDNA) regulated cell death (RCD), the type 3 secretion system (T3SS) effector IpgD from *S. flexneri* actively prevents RCD in the early phases of infection upon binding to IP<sub>3</sub>R channels (A). During *Listeria monocytogenes* infection, mitochondrial Ca<sup>2+</sup> waves promote the activation of the pyruvate dehydrogenase (PDH) complex, ultimately resulting in accumulation of acetyl-CoA (Ac-CoA), acetylation of rubicon (RUBCN) and inhibition of LC3-associated phagocytosis



(LAP) **(B)**. BAK1, BCL2 antagonist/killer 1; BAX, BCL2 associated X, apoptosis regulator; CYCS, cytochrome c, somatic; MAMs, mitochondria-associated ER membranes; MICU1, mitochondrial calcium uptake 1, LLO, listeriolysin O.

**Figure 3. Shifts in mitochondrial dynamics upon bacterial infections.** Numerous pathogenic bacteria encode factors that promote mitochondrial fission, via mechanisms that may or may not involve dynamin 1 like (DNM1L, best known as DRP1). This can support metabolic rewiring in host cells, favor mitophagy or precipitate cell death **(A)**. Conversely, *Chlamydia trachomatis* promotes mitochondrial elongation (by inhibiting fission) in support of increased ATP production via a hitherto unidentified factor **(B)**. LLO, listeriolysin O; PorB, porin B; VacA, vacuolating cytotoxin A.

**Figure 4. Control of mitophagy and RCD by invading pathogens.** Mitochondrial damage caused by *Pseudomonas aeruginosa* and *Listeria monocytogenes* is associated with an increase in reactive oxygen species (ROS) that drives NLR family member X1 (NLRX1)-dependent mitophagy **(A)**. A variety of bacterial species encoded cytotoxic and cytoprotective factors that interact with the molecular machinery causing mitochondrial outer membrane permeabilization (MOMP) or mitochondrial permeability transition (MPT) to control caspase-dependent and caspase-independent forms of regulated cell death **(B)**.  $\Delta\psi_m$ , mitochondrial transmembrane potential; BAK1, BCL2 antagonist/killer 1; BAX, BCL2 associated X, apoptosis regulator; CYCS, cytochrome c, somatic; PTPC, permeability transition pore complex.

## References

1. Gray, M.W. *et al.* (1999) Mitochondrial evolution. *Science* 283, 1476-1481. 10.1126/science.283.5407.1476
2. Fan, L. *et al.* (2020) Phylogenetic analyses with systematic taxon sampling show that mitochondria branch within Alphaproteobacteria. *Nature ecology & evolution* 4, 1213-1219. 10.1038/s41559-020-1239-x
3. Galluzzi, L. *et al.* (2018) Molecular mechanisms of cell death: recommendations of the Nomenclature Committee on Cell Death 2018. *Cell Death Differ* 25, 486-541. 10.1038/s41418-017-0012-4
4. Galluzzi, L. *et al.* (2012) Mitochondria: master regulators of danger signalling. *Nature reviews. Molecular cell biology* 13, 780-788. 10.1038/nrm3479
5. Tiku, V. *et al.* (2020) Mitochondrial Functions in Infection and Immunity. *Trends in cell biology* 30, 263-275. 10.1016/j.tcb.2020.01.006
6. Gleeson, L.E. *et al.* (2016) Cutting Edge: Mycobacterium tuberculosis Induces Aerobic Glycolysis in Human Alveolar Macrophages That Is Required for Control of Intracellular Bacillary Replication. *Journal of immunology* 196, 2444-2449. 10.4049/jimmunol.1501612
7. Russell, D.G. *et al.* (2019) Immunometabolism at the interface between macrophages and pathogens. *Nature reviews. Immunology* 19, 291-304. 10.1038/s41577-019-0124-9
8. Murphy, M.P. and O'Neill, L.A.J. (2018) Krebs Cycle Reimagined: The Emerging Roles of Succinate and Itaconate as Signal Transducers. *Cell* 174, 780-784. 10.1016/j.cell.2018.07.030
9. Michelucci, A. *et al.* (2013) Immune-responsive gene 1 protein links metabolism to immunity by catalyzing itaconic acid production. *Proceedings of the National Academy of Sciences of the United States of America* 110, 7820-7825. 10.1073/pnas.1218599110
10. Yao, C.H. *et al.* (2019) Mitochondrial fusion supports increased oxidative phosphorylation during cell proliferation. *eLife* 8. 10.7554/eLife.41351

11. Kapetanovic, R. *et al.* (2020) Lipopolysaccharide promotes Drp1-dependent mitochondrial fission and associated inflammatory responses in macrophages. *Immunology and cell biology* 98, 528-539. 10.1111/imcb.12363
12. Riquelme, S.A. *et al.* (2019) CFTR-PTEN-dependent mitochondrial metabolic dysfunction promotes *Pseudomonas aeruginosa* airway infection. *Science translational medicine* 11. 10.1126/scitranslmed.aav4634
13. Czyz, D.M. *et al.* (2017) *Brucella abortus* Induces a Warburg Shift in Host Metabolism That Is Linked to Enhanced Intracellular Survival of the Pathogen. *Journal of bacteriology* 199. 10.1128/JB.00227-17
14. Billig, S. *et al.* (2017) Lactate oxidation facilitates growth of *Mycobacterium tuberculosis* in human macrophages. *Scientific reports* 7, 6484. 10.1038/s41598-017-05916-7
15. Cumming, B.M. *et al.* (2018) *Mycobacterium tuberculosis* induces decelerated bioenergetic metabolism in human macrophages. *eLife* 7. 10.7554/eLife.39169
16. Singh, V. *et al.* (2012) *Mycobacterium tuberculosis*-driven targeted recalibration of macrophage lipid homeostasis promotes the foamy phenotype. *Cell host & microbe* 12, 669-681. 10.1016/j.chom.2012.09.012
17. Kurihara, Y. *et al.* (2019) *Chlamydia trachomatis* targets mitochondrial dynamics to promote intracellular survival and proliferation. *Cellular microbiology* 21, e12962. 10.1111/cmi.12962
18. Siegl, C. *et al.* (2014) Tumor suppressor p53 alters host cell metabolism to limit *Chlamydia trachomatis* infection. *Cell reports* 9, 918-929. 10.1016/j.celrep.2014.10.004
19. Lachmandas, E. *et al.* (2016) Microbial stimulation of different Toll-like receptor signalling pathways induces diverse metabolic programmes in human monocytes. *Nature microbiology* 2, 16246. 10.1038/nmicrobiol.2016.246
20. Tikku, V. *et al.* (2021) Outer membrane vesicles containing OmpA induce mitochondrial fragmentation to promote pathogenesis of *Acinetobacter baumannii*. *Scientific reports* 11, 618. 10.1038/s41598-020-79966-9

21. Wickersham, M. *et al.* (2017) Metabolic Stress Drives Keratinocyte Defenses against Staphylococcus aureus Infection. *Cell reports* 18, 2742-2751. 10.1016/j.celrep.2017.02.055
22. Tran Van Nhieu, G. *et al.* (2018) Ca(2+) signals triggered by bacterial pathogens and microdomains. *Biochimica et biophysica acta. Molecular cell research* 1865, 1838-1845. 10.1016/j.bbamcr.2018.08.007
23. Murphy, E. and Steenbergen, C. (2021) Regulation of Mitochondrial Ca(2+) Uptake. *Annu Rev Physiol* 83, 107-126. 10.1146/annurev-physiol-031920-092419
24. Giorgi, C. *et al.* (2018) The machineries, regulation and cellular functions of mitochondrial calcium. *Nature reviews. Molecular cell biology* 19, 713-730. 10.1038/s41580-018-0052-8
25. Galluzzi, L. *et al.* (2017) Molecular definitions of autophagy and related processes. *Embo j* 36, 1811-1836. 10.15252/emj.201796697
26. Stelzner, K. *et al.* (2020) Intracellular Staphylococcus aureus Perturbs the Host Cell Ca(2+) Homeostasis To Promote Cell Death. *mBio* 11. 10.1128/mBio.02250-20
27. Datta, D. *et al.* (2018) Mycobacterium fortuitum-induced ER-Mitochondrial calcium dynamics promotes calpain/caspase-12/caspase-9 mediated apoptosis in fish macrophages. *Cell death discovery* 4, 30. 10.1038/s41420-018-0034-9
28. Nerlich, A. *et al.* (2018) Pneumolysin induced mitochondrial dysfunction leads to release of mitochondrial DNA. *Scientific reports* 8, 182. 10.1038/s41598-017-18468-7
29. Yamazaki, T. *et al.* (2020) Mitochondrial DNA drives abscopal responses to radiation that are inhibited by autophagy. *Nature immunology* 21, 1160-1171. 10.1038/s41590-020-0751-0
30. Matz, K.M. *et al.* (2019) The Role of Nucleic Acid Sensing in Controlling Microbial and Autoimmune Disorders. *Int Rev Cell Mol Biol* 345, 35-136. 10.1016/bs.ircmb.2018.08.002
31. Carneiro, L.A. *et al.* (2009) Shigella induces mitochondrial dysfunction and cell death in nonmyeloid cells. *Cell host & microbe* 5, 123-136. 10.1016/j.chom.2008.12.011

32. Sun, C.H. *et al.* (2017) The Shigella type III effector IpgD recodes Ca(2+) signals during invasion of epithelial cells. *The EMBO journal* 36, 2567-2580. 10.15252/emj.201696272
33. Rosa, N. *et al.* (2020) Type 3 IP3 receptors: The chameleon in cancer. *International review of cell and molecular biology* 351, 101-148. 10.1016/bs.ircmb.2020.02.003
34. Imre, G. (2020) The involvement of regulated cell death forms in modulating the bacterial and viral pathogenesis. *Int Rev Cell Mol Biol* 353, 211-253. 10.1016/bs.ircmb.2019.12.008
35. Dramsi, S. and Cossart, P. (2003) Listeriolysin O-mediated calcium influx potentiates entry of Listeria monocytogenes into the human Hep-2 epithelial cell line. *Infection and immunity* 71, 3614-3618. 10.1128/IAI.71.6.3614-3618.2003
36. Li, T. *et al.* (2021) Listeria monocytogenes upregulates mitochondrial calcium signalling to inhibit LC3-associated phagocytosis as a survival strategy. *Nat Microbiol* 6, 366-379. 10.1038/s41564-020-00843-2
37. Denton, R.M. (2009) Regulation of mitochondrial dehydrogenases by calcium ions. *Biochimica et biophysica acta* 1787, 1309-1316. 10.1016/j.bbabi.2009.01.005
38. Wong, S.W. *et al.* (2018) Rubicon: LC3-associated phagocytosis and beyond. *The FEBS journal* 285, 1379-1388. 10.1111/febs.14354
39. Datan, E. and Salman, S. (2020) Autophagic cell death in viral infection: Do TAM receptors play a role? *Int Rev Cell Mol Biol* 357, 123-168. 10.1016/bs.ircmb.2020.10.001
40. Kamer, K.J. and Mootha, V.K. (2015) The molecular era of the mitochondrial calcium uniporter. *Nature reviews. Molecular cell biology* 16, 545-553. 10.1038/nrm4039
41. Palty, R. *et al.* (2010) NCLX is an essential component of mitochondrial Na<sup>+</sup>/Ca<sup>2+</sup> exchange. *Proceedings of the National Academy of Sciences of the United States of America* 107, 436-441. 10.1073/pnas.0908099107
42. Carvalho, F. *et al.* (2020) Listeria monocytogenes Exploits Mitochondrial Contact Site and Cristae Organizing System Complex Subunit Mic10 To Promote Mitochondrial Fragmentation and Cellular Infection. *mBio* 11. 10.1128/mBio.03171-19

43. Payne, R. *et al.* (2017) MICU2 Restricts Spatial Crosstalk between InsP(3)R and MCU Channels by Regulating Threshold and Gain of MICU1-Mediated Inhibition and Activation of MCU. *Cell Rep* 21, 3141-3154. 10.1016/j.celrep.2017.11.064
44. Kostic, M. *et al.* (2015) PKA Phosphorylation of NCLX Reverses Mitochondrial Calcium Overload and Depolarization, Promoting Survival of PINK1-Deficient Dopaminergic Neurons. *Cell reports* 13, 376-386. 10.1016/j.celrep.2015.08.079
45. Cardenas, C. *et al.* (2010) Essential regulation of cell bioenergetics by constitutive InsP3 receptor Ca<sup>2+</sup> transfer to mitochondria. *Cell* 142, 270-283. 10.1016/j.cell.2010.06.007
46. Nguyen, P.H. *et al.* (2018) Chlamydia trachomatis inclusion membrane protein MrcA interacts with the inositol 1,4,5-trisphosphate receptor type 3 (ITPR3) to regulate extrusion formation. *PLoS pathogens* 14, e1006911. 10.1371/journal.ppat.1006911
47. Marchi, S. *et al.* (2020) Ca(2+) Fluxes and Cancer. *Molecular cell* 78, 1055-1069. 10.1016/j.molcel.2020.04.017
48. Glab, J.A. *et al.* (2020) Bcl-2 family proteins, beyond the veil. *International review of cell and molecular biology* 351, 1-22. 10.1016/bs.ircmb.2019.12.001
49. Maes, M.E. *et al.* (2019) Completion of BAX recruitment correlates with mitochondrial fission during apoptosis. *Scientific reports* 9, 16565. 10.1038/s41598-019-53049-w
50. Jain, P. *et al.* (2011) Helicobacter pylori vacuolating cytotoxin A (VacA) engages the mitochondrial fission machinery to induce host cell death. *Proceedings of the National Academy of Sciences of the United States of America* 108, 16032-16037. 10.1073/pnas.1105175108
51. Kozjak-Pavlovic, V. *et al.* (2009) Bacterial porin disrupts mitochondrial membrane potential and sensitizes host cells to apoptosis. *PLoS pathogens* 5, e1000629. 10.1371/journal.ppat.1000629
52. Deo, P. *et al.* (2018) Outer membrane vesicles from Neisseria gonorrhoeae target PorB to mitochondria and induce apoptosis. *PLoS pathogens* 14, e1006945. 10.1371/journal.ppat.1006945

53. Deo, P. *et al.* (2020) Mitochondrial dysfunction caused by outer membrane vesicles from Gram-negative bacteria activates intrinsic apoptosis and inflammation. *Nature microbiology* 5, 1418-1427. 10.1038/s41564-020-0773-2
54. Stavru, F. *et al.* (2011) *Listeria monocytogenes* transiently alters mitochondrial dynamics during infection. *Proceedings of the National Academy of Sciences of the United States of America* 108, 3612-3617. 10.1073/pnas.1100126108
55. Stavru, F. *et al.* (2013) Atypical mitochondrial fission upon bacterial infection. *Proceedings of the National Academy of Sciences of the United States of America* 110, 16003-16008. 10.1073/pnas.1315784110
56. Kraus, F. *et al.* (2021) Function and regulation of the divisome for mitochondrial fission. *Nature* 590, 57-66. 10.1038/s41586-021-03214-x
57. Willems, P.H. *et al.* (2015) Redox Homeostasis and Mitochondrial Dynamics. *Cell metabolism* 22, 207-218. 10.1016/j.cmet.2015.06.006
58. Escoll, P. *et al.* (2017) *Legionella pneumophila* Modulates Mitochondrial Dynamics to Trigger Metabolic Repurposing of Infected Macrophages. *Cell host & microbe* 22, 302-316 e307. 10.1016/j.chom.2017.07.020
59. Harada, T. *et al.* (2007) Evasion of *Legionella pneumophila* from the bactericidal system by reactive oxygen species (ROS) in macrophages. *Microbiology and immunology* 51, 1161-1170. 10.1111/j.1348-0421.2007.tb04011.x
60. Francione, L. *et al.* (2009) *Legionella pneumophila* multiplication is enhanced by chronic AMPK signalling in mitochondrially diseased *Dictyostelium* cells. *Disease models & mechanisms* 2, 479-489. 10.1242/dmm.003319
61. Toyama, E.Q. *et al.* (2016) Metabolism. AMP-activated protein kinase mediates mitochondrial fission in response to energy stress. *Science* 351, 275-281. 10.1126/science.aab4138
62. Pervaiz, S. *et al.* (2020) Redox signaling in the pathogenesis of human disease and the regulatory role of autophagy. *International review of cell and molecular biology* 352, 189-214. 10.1016/bs.ircmb.2020.03.002

63. Tur, J. *et al.* (2020) Mitofusin 2 in Macrophages Links Mitochondrial ROS Production, Cytokine Release, Phagocytosis, Autophagy, and Bactericidal Activity. *Cell reports* 32, 108079. 10.1016/j.celrep.2020.108079
64. Cohen, T.S. *et al.* (2018) S. aureus Evades Macrophage Killing through NLRP3-Dependent Effects on Mitochondrial Trafficking. *Cell Rep* 22, 2431-2441. 10.1016/j.celrep.2018.02.027
65. Burman, J.L. *et al.* (2017) Mitochondrial fission facilitates the selective mitophagy of protein aggregates. *The Journal of cell biology* 216, 3231-3247. 10.1083/jcb.201612106
66. Zhang, Y. *et al.* (2019) Listeria hijacks host mitophagy through a novel mitophagy receptor to evade killing. *Nature immunology* 20, 433-446. 10.1038/s41590-019-0324-2
67. Chowdhury, S.R. *et al.* (2017) Chlamydia preserves the mitochondrial network necessary for replication via microRNA-dependent inhibition of fission. *The Journal of cell biology* 216, 1071-1089. 10.1083/jcb.201608063
68. Boncompain, G. *et al.* (2010) Production of reactive oxygen species is turned on and rapidly shut down in epithelial cells infected with Chlamydia trachomatis. *Infection and immunity* 78, 80-87. 10.1128/IAI.00725-09
69. Abdul-Sater, A.A. *et al.* (2010) Enhancement of reactive oxygen species production and chlamydial infection by the mitochondrial Nod-like family member NLRX1. *The Journal of biological chemistry* 285, 41637-41645. 10.1074/jbc.M110.137885
70. Silwal, P. *et al.* (2021) Mitofusin-2 boosts innate immunity through the maintenance of aerobic glycolysis and activation of xenophagy in mice. *Communications biology* 4, 548. 10.1038/s42003-021-02073-6
71. Ning, Y. *et al.* (2021) Mitochondrial fusion mediated by mitofusin 1 regulates macrophage mycobactericidal activity by enhancing autophagy. *Infection and immunity*, IAI0030621
72. Park, S. *et al.* (2015) Defective mitochondrial fission augments NLRP3 inflammasome activation. *Scientific reports* 5, 15489. 10.1038/srep15489

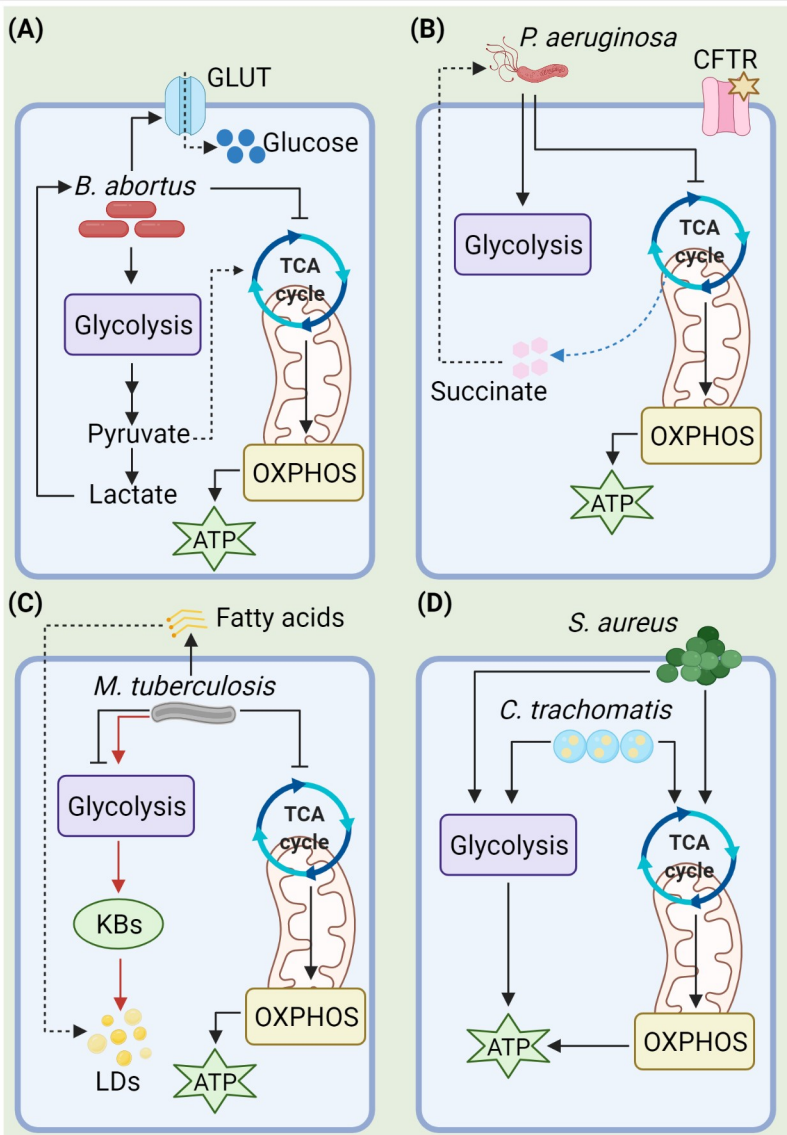


73. Pernas, L. *et al.* (2018) Mitochondria Restrict Growth of the Intracellular Parasite *Toxoplasma gondii* by Limiting Its Uptake of Fatty Acids. *Cell metabolism* 27, 886-897 e884. 10.1016/j.cmet.2018.02.018
74. Perrone, M. *et al.* (2020) The role of mitochondria-associated membranes in cellular homeostasis and diseases. *International review of cell and molecular biology* 350, 119-196. 10.1016/bs.ircmb.2019.11.002
75. Rowland, A.A. and Voeltz, G.K. (2012) Endoplasmic reticulum-mitochondria contacts: function of the junction. *Nature reviews. Molecular cell biology* 13, 607-625. 10.1038/nrm3440
76. Genevrois, S. *et al.* (2003) The Omp85 protein of *Neisseria meningitidis* is required for lipid export to the outer membrane. *The EMBO journal* 22, 1780-1789. 10.1093/emboj/cdg174
77. Kozjak-Pavlovic, V. *et al.* (2011) Neisserial Omp85 protein is selectively recognized and assembled into functional complexes in the outer membrane of human mitochondria. *The Journal of biological chemistry* 286, 27019-27026. 10.1074/jbc.M111.232249
78. Modi, S. *et al.* (2019) Miro clusters regulate ER-mitochondria contact sites and link cristae organization to the mitochondrial transport machinery. *Nature communications* 10, 4399. 10.1038/s41467-019-12382-4
79. Rochin, L. *et al.* (2020) ORP5 Transfers Phosphatidylserine To Mitochondria And Regulates Mitochondrial Calcium Uptake At Endoplasmic Reticulum - Mitochondria Contact Sites. *bioRxiv*, 695577. 10.1101/695577
80. Escoll, P. *et al.* (2017) MAMs are attractive targets for bacterial repurposing of the host cell: MAM-functions might be key for undermining an infected cell. *BioEssays : news and reviews in molecular, cellular and developmental biology* 39. 10.1002/bies.201600171
81. Rolando, M. *et al.* (2016) *Legionella pneumophila* S1P-lyase targets host sphingolipid metabolism and restrains autophagy. *Proceedings of the National Academy of Sciences of the United States of America* 113, 1901-1906. 10.1073/pnas.1522067113

82. Arasaki, K. *et al.* (2017) Legionella effector Lpg1137 shuts down ER-mitochondria communication through cleavage of syntaxin 17. *Nature communications* 8, 15406. 10.1038/ncomms15406
83. Dolezal, P. *et al.* (2012) Legionella pneumophila secretes a mitochondrial carrier protein during infection. *PLoS pathogens* 8, e1002459. 10.1371/journal.ppat.1002459
84. Rimessi, A. *et al.* (2020) Pharmacological modulation of mitochondrial calcium uniporter controls lung inflammation in cystic fibrosis. *Science advances* 6, eaax9093. 10.1126/sciadv.aax9093
85. Maurice, N.M. *et al.* (2019) Pseudomonas aeruginosa Induced Host Epithelial Cell Mitochondrial Dysfunction. *Scientific reports* 9, 11929. 10.1038/s41598-019-47457-1
86. Smith, R.P. *et al.* (2020) The mechanisms and cell signaling pathways of programmed cell death in the bacterial world. *Int Rev Cell Mol Biol* 352, 1-53. 10.1016/bs.ircmb.2019.12.002
87. Hamasaki, M. *et al.* (2013) Autophagosomes form at ER-mitochondria contact sites. *Nature* 495, 389-393. 10.1038/nature11910
88. Kimmey, J.M. and Stallings, C.L. (2016) Bacterial Pathogens versus Autophagy: Implications for Therapeutic Interventions. *Trends in molecular medicine* 22, 1060-1076. 10.1016/j.molmed.2016.10.008
89. Farré, J.C. and Subramani, S. (2016) Mechanistic insights into selective autophagy pathways: lessons from yeast. *Nat Rev Mol Cell Biol* 17, 537-552. 10.1038/nrm.2016.74
90. Jabir, M.S. *et al.* (2015) Mitochondrial damage contributes to Pseudomonas aeruginosa activation of the inflammasome and is downregulated by autophagy. *Autophagy* 11, 166-182. 10.4161/15548627.2014.981915
91. Rao, L. *et al.* (2021) Pseudomonas aeruginosa survives in epithelia by ExoS-mediated inhibition of autophagy and mTOR. *EMBO reports* 22, e50613. 10.15252/embr.202050613
92. Bonilla, D.L. *et al.* (2013) Autophagy regulates phagocytosis by modulating the expression of scavenger receptors. *Immunity* 39, 537-547. 10.1016/j.immuni.2013.08.026

93. Banga, S. *et al.* (2007) Legionella pneumophila inhibits macrophage apoptosis by targeting pro-death members of the Bcl2 protein family. *Proceedings of the National Academy of Sciences of the United States of America* 104, 5121-5126. 10.1073/pnas.0611030104
94. Laguna, R.K. *et al.* (2006) A Legionella pneumophila-translocated substrate that is required for growth within macrophages and protection from host cell death. *Proceedings of the National Academy of Sciences of the United States of America* 103, 18745-18750. 10.1073/pnas.0609012103
95. Speir, M. *et al.* (2017) Legionella pneumophila Strain 130b Evades Macrophage Cell Death Independent of the Effector SidF in the Absence of Flagellin. *Frontiers in cellular and infection microbiology* 7, 35. 10.3389/fcimb.2017.00035
96. Escoll, P. *et al.* (2021) Reverting the mode of action of the mitochondrial FOF1-ATPase by Legionella pneumophila preserves its replication niche. *bioRxiv*, 2021.2005.2012.443790. 10.1101/2021.05.12.443790
97. Zhu, W. *et al.* (2013) Induction of caspase 3 activation by multiple Legionella pneumophila Dot/Icm substrates. *Cellular microbiology* 15, 1783-1795. 10.1111/cmi.12157
98. Lei, W. *et al.* (2017) Chlamydia trachomatis plasmid-encoded protein pORF5 protects mitochondrial function by inducing mitophagy and increasing HMGB1 expression. *Pathogens and disease* 75. 10.1093/femspd/ftx111
99. Aguiló, N. *et al.* (2014) Bim is a crucial regulator of apoptosis induced by Mycobacterium tuberculosis. *Cell Death Dis* 5, e1343. 10.1038/cddis.2014.313
100. Dubey, R.K. *et al.* (2021) Mycobacterial origin protein Rv0674 localizes into mitochondria, interacts with D-loop and regulates OXPHOS for intracellular persistence of Mycobacterium tuberculosis. *Mitochondrion* 57, 241-256. 10.1016/j.mito.2020.11.014
101. Bonora, M. *et al.* (2015) Molecular mechanisms of cell death: central implication of ATP synthase in mitochondrial permeability transition. *Oncogene* 34, 1475-1486. 10.1038/onc.2014.96

102. Essmann, F. *et al.* (2003) Staphylococcus aureus alpha-toxin-induced cell death: predominant necrosis despite apoptotic caspase activation. *Cell death and differentiation* 10, 1260-1272. 10.1038/sj.cdd.4401301
103. Genestier, A.L. *et al.* (2005) Staphylococcus aureus Panton-Valentine leukocidin directly targets mitochondria and induces Bax-independent apoptosis of human neutrophils. *The Journal of clinical investigation* 115, 3117-3127. 10.1172/JCI22684
104. Arizmendi, O. *et al.* (2016) Macrophage Apoptosis Triggered by IpaD from Shigella flexneri. *Infection and immunity* 84, 1857-1865. 10.1128/IAI.01483-15
105. Morris, F.C. *et al.* (2019) The Mechanisms of Disease Caused by Acinetobacter baumannii. *Frontiers in microbiology* 10, 1601. 10.3389/fmicb.2019.01601
106. Wang, X. *et al.* (2020) Stenotrophomonas maltophilia outer membrane protein A induces epithelial cell apoptosis via mitochondrial pathways. *Journal of microbiology* 58, 868-877. 10.1007/s12275-020-0235-9
107. Roger, A.J. *et al.* (2017) The Origin and Diversification of Mitochondria. *Curr Biol* 27, R1177-R1192. 10.1016/j.cub.2017.09.015
108. Galluzzi, L. *et al.* (2018) Linking cellular stress responses to systemic homeostasis. *Nat Rev Mol Cell Biol* 19, 731-745. 10.1038/s41580-018-0068-0
109. Matsumoto, A. *et al.* (2011) Helicobacter pylori VacA reduces the cellular expression of STAT3 and pro-survival Bcl-2 family proteins, Bcl-2 and Bcl-XL, leading to apoptosis in gastric epithelial cells. *Digestive diseases and sciences* 56, 999-1006. 10.1007/s10620-010-1420-1
110. Lee, K.I. *et al.* (2021) Recombinant Rv1654 protein of Mycobacterium tuberculosis induces mitochondria-mediated apoptosis in macrophage. *Microbiology and immunology* 65, 178-188. 10.1111/1348-0421.12880



(A) *S. aureus*  
*S. pneumoniae*  
*S. flexneri*

(B) *L. monocytogenes*

