



# Spatial patterns and drivers of benthic community structure on the northern Adriatic biogenic reefs

Fabrizio Gianni<sup>1,2</sup> · Eva Turicchia<sup>3,4,5</sup> · Marco Abbiati<sup>4,5,6</sup> · Barbara Calcinaï<sup>7</sup> · Annalisa Caragnano<sup>7</sup> · Saul Ciriaco<sup>8</sup> · Federica Costantini<sup>3,4,5</sup> · Sara Kaleb<sup>9</sup> · Luigi Piazzi<sup>10</sup> · Stefania Puce<sup>7</sup> · Stefano Querin<sup>1</sup> · Fabio Rindi<sup>7</sup> · Cosimo Solidoro<sup>1</sup> · Vinko Bandelj<sup>1,2</sup> · Massimo Ponti<sup>3,4,5</sup> · Annalisa Falace<sup>5,9</sup>

Received: 29 September 2022 / Revised: 15 May 2023 / Accepted: 9 June 2023 / Published online: 26 June 2023  
© The Author(s) 2023

## Abstract

The northern Adriatic Sea (NAS) hosts numerous biogenic subtidal reefs that are considered biodiversity hotspots. Several studies have already investigated the origin and biodiversity of these reefs. However, many of them are still unexplored and further knowledge is needed for their conservation. Here, the spatial variability, epibenthic community structure, and environmental features that characterize these habitats were investigated. Fifteen randomly selected reefs were sampled between 2013 and 2017, including some remote sites that have never been studied before. A fuzzy k-means clustering method and redundancy analysis were used to find similarities among sites in terms of epibenthic assemblages and to model relationships with abiotic variables. The results showed that these reefs are highly heterogeneous in terms of species composition and geomorphological features. The results were also consistent with previous studies and highlighted three main types of benthic assemblages defined by the dominance of different organisms, mainly reflecting the coastal-offshore gradient: nearshore reefs, generally dominated by stress-tolerant species; reefs at a middle distance from the coast, characterized by sponges, non-calcareous encrusting algae and ascidians; offshore reefs, dominated by reef builders. However, distance from the coast was not the only factor affecting species distribution, as other local factors and environmental characteristics also played a role. This kind of biogenic reefs in temperate seas are still poorly known. The present work contributed to shed further light on these habitats, by complementing the results of previous studies on their natural diversity, highlighting the specificity of the epibenthic communities of NAS reefs and the need to improve current, still inadequate, conservation measures.

**Keywords** Rocky outcrops · Temperate reefs · Species diversity · Coralligenous · Macrobenthos · Mediterranean Sea

---

Vinko Bandelj, Massimo Ponti and Annalisa Falace share the last authorship.

---

Extended author information available on the last page of the article

## Introduction

Marine organisms generally exhibit complex spatial distribution patterns, often related to environmental gradients. Habitat types, species distribution, and composition are the result of various elements that include biotic and abiotic factors as well as historical events (Bandelj et al. 2012; Brown et al. 2016; Silva et al. 2021). For example, large and rapid fluctuations in abiotic variables such as salinity and temperature can be critical for both vagile organisms, that move across spatial gradients, and sessile or sedentary species, that cannot escape such changes (Laprise and Dodson 1994; Pansch et al. 2018; Jones et al. 2020). These fluctuations can cause significant physiological stress to organisms, affecting their metabolism, reproduction, and ultimately their survival (Solan and Whiteley 2016; Pourmozaffar et al. 2020). Similar effects can result from increased sediment runoff, which reduces photosynthesis, recruitment, and growth rates, and increases burial or scouring (Airoldi 2000; Balata et al. 2005; Irving et al. 2009; Erfteimeijer et al. 2012). Impacts can also be exacerbated by continued nutrient enrichment, which can lead to oxygen depletion and water quality degradation (Piazzi et al. 2012; Quimpo et al. 2020). These factors can then interact with other important biological and physical processes, such as larval and propagule supply, species competition, substrate types, and local oceanographic conditions (Ratray et al. 2016; Bandelj et al. 2020; Lurgi et al. 2020), resulting in complex responses that are often difficult to disentangle (Strain et al. 2014; Boyd and Brown 2015; Carrier-Belleau et al. 2021). In the long term, several studies have shown that this environmental variability plays an important role in regulating the distribution, abundance, and species composition of communities and shaping spatial patterns (Airoldi 1998; Mangialajo et al. 2008; Darling et al. 2013; Strain et al. 2014; Yang et al. 2015; Montefalcone et al. 2017). Therefore, the analysis of factors affecting species distribution and community composition is crucial for understanding environmental patterns and processes, adequately assessing ecological status, and for effective conservation measures (Crain and Bertness 2006; Pinedo and Ballesteros 2019).

Although the presence of some biogenic subtidal reefs on the incoherent substrates of the northern Adriatic Sea (NAS) has been known for at least two centuries (Olivi 1792), it is only in recent decades that the existence of a widespread mosaic of reefs has been confirmed (Stefanon and Zuppi 2000; Gordini et al. 2012). Locally referred to as “trezze” or “tegnùe,” they are particularly important because they form hard substrates in an extensive soft-bottom area, suitable for the settlement of sessile species (Fava et al. 2016). The rich and diverse epibenthic communities they host are attractive to fishermen and divers and contribute to increasing the socio-economic value of the area (Tribot et al. 2016; Chimienti et al. 2017; Tonin 2018). However, several local stressors threaten their health and conservation: chemical pollution, changes in salinity and nutrient concentrations due to river runoff, direct physical damage from fishing, anchoring, or diving, reduction in water clarity due to suspended sediments, hypoxia/anoxia events, marine debris, smothering due to high sediment loads and mucilaginous aggregates, and potential oil spill due to the high marine traffic in the area (Pranovi et al. 2000; Melli et al. 2017; Moschino et al. 2019; Farella et al. 2021; Ponti et al. 2021). Climate change impacts leading to heat waves (Galli et al. 2019; Garrabou et al. 2022, and references therein), increased frequency and intensity of storms (Teixidó et al. 2013), and seawater acidification (Zunino et al. 2019, 2021) are additional sources of disturbance to these habitats. For these reasons, biogenic reefs are internationally

protected (UNEP-MAP-RAC/SPA 2008), and some of them have been included in Natura 2000 sites.

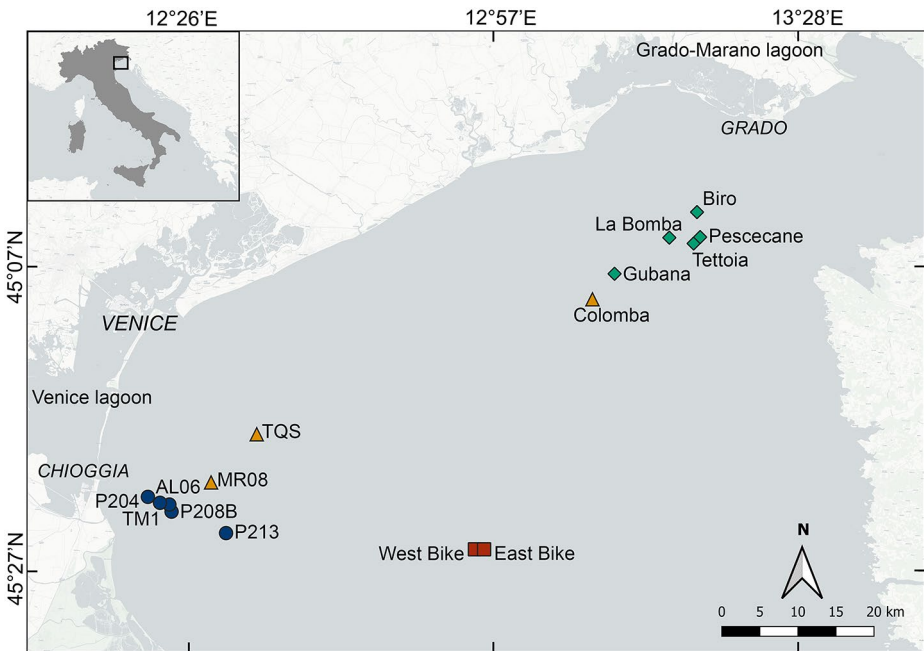
The primary origin of these reefs can be linked to various processes of diagenesis (Stefanon 1970), methanogenesis (Gordini et al. 2012; Donda et al. 2015), and lithification of sandy fossil channel-levee systems (Tosi et al. 2017). Calcareous benthic organisms further shaped these reefs by forming calcareous bio-concretions with different geomorphologies on the primary hard substrate (Gordini et al. 2012; Turicchia et al. 2022). Benthic assemblages on these reefs differ markedly from those on the coralligenous banks elsewhere in the Mediterranean (Ingrosso et al. 2018), exhibiting greater spatial heterogeneity (at local and regional scales) than temporal variability (between years) in species composition and abundance (Ponti et al. 2011; Curiel et al. 2012; Falace et al. 2015). These differences are likely due to a combination of factors, including the extent of reef isolation, sedimentation, nutrient loading, and the large spatial variability of environmental properties of the region, which is largely influenced by local geology, hydrology, climate, and human use. Indeed, as a semi-enclosed basin (surrounded by extensive drainage areas) with a maximum depth of less than 70 m and an average depth of 30 m, the NAS is particularly influenced by freshwater inputs from rivers and lagoons, as well as by strong hydrological and meteorological variability (Aubry et al. 2004; Solidoro et al. 2009). Surface currents, which normally move counterclockwise along the coast (Poulain et al. 2001), change direction during strong winds (Bora or Burjan, the prevailing NE wind in the region) (Kuzmić et al. 2006) and during freshwater plume intrusion from the Po River (Jeffries and Lee 2007). The geomorphological characteristics of reefs (shape, height above the seafloor, depth, degree of isolation) also affect the structure of benthic communities. For example, species richness and diversity have been found to increase with depth and decrease with reef height and seafloor mud content (Ponti et al. 2011). Hydrodynamic conditions, and coastal freshwater, also play a critical role in regulating beta diversity and species composition, with species sensitive to sedimentation and high nutrient loading being displaced, especially on offshore reefs (Ponti et al. 2011; Falace et al. 2015; Bandelj et al. 2020). Benthic communities on biogenic reefs appear to be more interconnected than with the coast, depending on the pelagic larval duration (PLD) of species and small-scale variability of currents (Bandelj et al. 2020). However, some authors have shown that asexual reproduction is also a widespread strategy to colonize space and maintain species diversity in these communities (Fava et al. 2016).

Although many studies have documented various aspects of these biogenic reefs, more information is needed to better understand the role of geomorphology and the effects of environmental gradients on benthic community structure, especially given the large number of reefs that remain unexplored. In addition, most of the studies have considered the zoobenthic and phytobenthic communities separately, presented qualitative data, and have often been published in local journals. The objective of this study was to (1) investigate the spatial variability of both zoobenthic and phytobenthic assemblages; (2) increase knowledge of the structure of epibenthic assemblages; (3) unravel the key environmental variables and geomorphological features that influence the observed variability; (4) examine unstudied reefs to assess whether the observed dynamics and patterns are consistent with other reefs. The results of this study will be particularly useful for improving conservation efforts in the NAS, as current regulations appear insufficient to ensure preservation of species connectivity and benthic community representativeness (Bandelj et al. 2020).

## Materials and methods

### Study area

The NAS, the northernmost part of the central Mediterranean (Fig. 1), is characterized by sedimentary coasts on the northern and southwestern Italian sides of the basin, with numerous coastal lagoons (Grado-Marano, Caorle, and Venice) and estuaries (Isonzo-Soča, Tagliamento, Piave, Adige), including the large delta of the Po river. The eastern and north-eastern coasts, on the other hand, are predominantly rocky with high and steep shores, bays, and deep fjords. The seafloor of the NAS consists of a large continental shelf characterized by distinct terrigenous sedimentary facies (Spagnoli et al. 2014). Several hundred biogenic reefs are scattered randomly on sandy and muddy bottoms in this area, at depths ranging from 7 to 30 m and 1 to 40 km from the coast. They are separated by distances ranging from a few meters to several tens of kilometers (Trincardi et al. 1994; Caressa et al. 2001; Gordini et al. 2012), have either large horizontal surfaces or high structures (up to 4 m high above the seafloor), and are either widespread or clustered ranging in size from 1 m<sup>2</sup> to 1 km<sup>2</sup> (Casellato and Stefanon 2008; Gordini et al. 2012). Most of them are in areas almost parallel to the coast between Chioggia and Grado, off the Venice and Grado-Marano lagoons, while others are more isolated and offshore (Fig. 1).



**Fig. 1** Geographical distribution of the selected biogenic reefs in the northern Adriatic Sea, including two previously unstudied reefs (West Bike and East Bike). The four groups of sites identified by the cluster analysis are shown in distinct colors (green diamonds: Group 1; orange triangles: Group 2; blue circles: Group 3; red squares: Group 4)

## Data collection

Fifteen biogenic reefs located between the Gulf of Trieste and the Gulf of Venice, including two remote previously unstudied reefs (West Bike and East Bike), were randomly selected considering different distances from the coast, depths, and morphologies (Fig. 1; Table 1). Ten random 588 cm<sup>2</sup> areas (21 × 28 cm rectangles) were photographed on each reef in July–August 2013 or July–August 2017 (Fig. 1; Table 1). Either a Canon PowerShot G12 or a Canon PowerShot G15 digital camera (with 10 and 12 megapixels, respectively; Canon, Tokyo, Japan) equipped with an aluminum underwater case, an S-TTL strobe (Inon D-2000), and a custom-made stainless-steel frame was used. Percent cover of sessile organisms, sediment, and mucilage was quantified by overlaying a grid of 400 equally sized squares using photoQuad image processing software (Trygonis and Sini 2012). Percent cover was based on the total readable area of each image, determined by subtracting dark and blurred zones or areas covered by vagile organisms (Ponti et al. 2018). Abundance of boring organisms was quantified based on their surface detection. Organisms were identified at the lowest possible taxonomic level (Table S1). Taxa were also assigned to different epibenthic categories: “Reef builders,” “Bioeroders,” “Non-calcareous (NC) encrusting algae,” “Turf,” “Sponges,” “Cnidarians,” “Ascidians,” and “Other algae” (Table S1).

Geomorphological information on the reefs (i.e., height above the seafloor (m), depth (m), distance from the coast (km), and class of extent (“Very small”: < 100 m<sup>2</sup>, “Small”: 100–2500 m<sup>2</sup>, “Medium”: 2500–10,000 m<sup>2</sup>, and “Large”: 10,000–50,000 m<sup>2</sup>) was obtained from available geophysical surveys conducted with a series of single and multibeam echosounders and side-scan sonars (Fortibuoni et al. 2020a, b; Gordini and Ciriaco 2020; Ponti 2020a, b), and visually confirmed by scientific divers during sampling. Sediment grain size reported as phi-scale ( $\phi$ ), was obtained from a detailed sedimentological map produced by interpolating the raw data (3-metric IDW) with a grid resolution of one kilometer. The inter-

**Table 1** List of the study sites with their group of membership as defined by Fuzzy k-Means, latitude and longitude (decimal degrees, geodetic datum: WGS84), sampling year and geomorphological features. Depth refers to the surrounding sedimentary sea bottom (tidal datum: mean lower low tide)

ID	Site	Group	Lat (°N)	Lon (°E)	Sampling year	Depth (m)	Height (m)	Distance from the coast (km)	Class of extent
1	AL06	3	45.20284	12.42069	2017	21.9	2.1	8.07	Medium
2	Biro	1	45.56538	13.29243	2017	17.3	1.5	13.16	Medium
3	Colomba	2	45.45945	13.11988	2017	23.4	3.0	19.50	Medium
4	East Bike	4	45.16056	12.94861	2017	30.4	2.6	38.36	Medium
5	Gubana	1	45.49023	13.15605	2017	23.4	3.0	16.71	Large
6	La Bomba	1	45.53443	13.24682	2017	19.4	2.0	16.27	Small
7	MR08	2	45.23052	12.48923	2017	22.2	1.5	13.79	Small
8	P204	3	45.21110	12.38441	2017	20.2	2.2	6.12	Large
9	P208B	3	45.19452	12.42470	2013	22.0	3.0	7.89	Medium
10	P213	3	45.17117	12.51688	2017	24.5	0.8	14.37	Small
11	Pescecane	1	45.53590	13.29858	2017	20.5	1.0	15.90	Small
12	Tettoia	1	45.52815	13.28785	2017	20.2	1.5	16.45	Small
13	TMI	3	45.20455	12.40495	2013	19.5	1.5	7.18	Large
14	TQS	2	45.28912	12.56314	2013	22.0	0.6	17.99	Small
15	West Bike	4	45.16028	12.93333	2017	29.8	3.3	37.34	Medium

polation distance metrics used were the geographic distances and water depth difference (Bostock et al. 2018). In situ measurements of physicochemical variables at the sea surface and bottom of the sampling sites (annual median, fifth, and ninety-fifth percentiles of chlorophyll ( $\mu\text{g/L}$ , Med/P5/P95\_CHL), seawater temperature ( $^{\circ}\text{C}$ , Med/P5/P95\_T), salinity (psu, Med/P5/P95\_SAL), dissolved oxygen ( $\text{mL/L}$ , Med/P5/P95\_OXY), ammonium ( $\mu\text{mol/L}$ , Med/P5/P95\_NH4), nitrates ( $\mu\text{mol/L}$ , Med/P5/P95\_NO3), phosphates ( $\mu\text{mol/L}$ , Med/P5/P95\_PO4), were obtained from the dataset reported in Solidoro et al. (2009), and from water sampling of the Regional Water Authorities (ARPA) of Veneto and Friuli Venezia Giulia Regions, using the same procedure described in Falace et al. (2015). The fifth and ninety-fifth percentiles of the physicochemical variables were considered instead of the absolute minimum and maximum values to avoid possible biases. Hydrodynamic data were obtained from a high-resolution numerical simulation of the NAS. In particular, the annual mean and maximum velocities ( $\text{m/s}$ , Mean\_V, Max\_V) and the mean kinetic energy (per unit mass) of the currents ( $\text{m}^2/\text{s}^2$ , Mean\_KE) at the sea surface and at the seafloor were analyzed. The numerical simulation is based on the Massachusetts Institute of Technology general circulation model (MITgcm), a three-dimensional finite volume model for geophysical fluid dynamics (Marshall et al. 1997). The computational domain extends north of  $43.5^{\circ}\text{N}$  with a horizontal resolution of  $1/128^{\circ}$  (about 600 and 850 m in zonal and meridional directions, respectively) and 27 unevenly spaced levels in the vertical direction. The NAS model is a downscaling of the Copernicus Marine Environment Monitoring Service (CMEMS - <https://marine.copernicus.eu/>) implemented in the framework of the CADEAU project (Silvestri et al. 2020). It explicitly considers the main rivers flowing into the basin and is forced by a high-resolution limited-area atmospheric model. Further details on the simulation features and setup are provided in Silvestri et al. (2020) and Bandelj et al. (2020).

## Data analysis

A Fuzzy k-Means (FkM) method was used to identify potential groups of sites with similar species composition and percent cover (Bandelj et al. 2012). This non-hierarchical clustering method assigns a value to all objects based on the strength of their membership in different groups. In this case, a site with a strong membership value to a group is associated with that group; otherwise, it has a high degree of fuzziness and a higher degree of association with other groups (Bezdek 2013). Prior to clustering, a Hellinger transformation was applied to the data to overcome the “double zero” problem (Legendre and Gallagher 2001). Analyses were computed by increasing the fuzziness parameter from 1.1 to 2 in increments of 0.1 and setting the number of random initializations to 999 (Borcard et al. 2011). A fuzziness parameter of 1.2 was chosen because lower values produced almost a non-fuzzy clustering, while higher values were unable to unambiguously assign all sites to a group. FkM clustering was performed using the “cluster” package for R (Maechler et al. 2022). The best number of clusters was selected by calculating various cluster validity indices (i.e., partition coefficient, partition entropy, modified partition coefficient, silhouette, fuzzy silhouette, Xie, and Beni) using the “fclust” package in R (Ferraro et al. 2019).

For each site and group identified by FkM, we calculated: species richness (S, number of taxa); Hill’s diversity index (N1), which can be interpreted as the effective number of species (i.e. the number of species in an equivalent community consisting of equally abundant species) derived from Shannon entropy (Cao and Hawkins 2019); the corresponding Hill’s

evenness index (N10); the percent cover of sessile organisms, sediment, and mucilage; and the percent cover and number of taxa of each epibenthic category. The height above the seafloor, depth, distance from the coast, class of extent, and sediment grain size for each group were also assessed using geomorphological information from the sites. In the text and graphs below, the mean values are given along with their standard errors (SE). To evaluate possible monotonic relationships, Spearman's rank correlation coefficients and corresponding p-values were calculated between geomorphological variables, mean values of diversity indices, and percent cover of epibenthic categories per site ( $\alpha=0.05$ ,  $n=15$ ) using the "Hmisc" package for R (Harrell 2019). A two-way permutational analysis of variance (PERMANOVA;  $\alpha=0.05$ , (Anderson and Robinson 2001) based on Euclidean distances was applied to assess differences in mean values of geomorphological attributes, diversity indices, and epibenthic categories between groups (Gr, fixed) and among sites (Si) asymmetrically nested in Gr, as resulting from cluster analysis. P-values were obtained by permutation of residuals under a reduced model: when less than 1000 unique permutations were available, the asymptotic Monte Carlo p-value was used instead of the permutational one. Significant values for the Gr factor were examined by post-hoc pairwise tests. Analysis was performed using PRIMER 7 with the PERMANOVA+ add-on package (Anderson et al. 2008).

The IndVal index (Duf rene and Legendre 1997; De C ceres and Legendre 2009) was applied to the discretized FkM results to identify characteristic taxa within site groups. This method combines the mean percent cover and frequency of occurrence of all taxa and determines their indicator values within all group combinations. Only taxa with a significant IndVal value ( $\alpha=0.05$ ) after 999 permutations of samples were considered indicators. Maximum IndVal values of indicator taxa were then reported on all divisions of a dendrogram built on the results of the FkM to show taxa representative of each group with eurytopic and stenotopic characteristics. Eurytopic taxa have a large niche width, and their indicator value decreases when the sites, where they are abundant, are divided into several groups, while stenotopic taxa are indicators of only one group of sites, suggesting that they have a small niche width (Duf rene and Legendre 1997). The IndVal was calculated using the "indicpecies" package for R (De C ceres and Legendre 2009).

Finally, multivariate direct gradient analysis using redundancy analysis (RDA) (van den Wollenberg 1977) was applied to the FkM results to model the relationship with geomorphological, physicochemical and spatial descriptors (Bandelj et al. 2012). Spatial descriptors used in the present study were longitude and latitude, and the Moran Eigenvector Maps (MEMs) (Dray et al. 2006). The MEMs are a method to explicitly modelling the spatial signal by decomposing it into a set of orthogonal, i.e., mutually independent, spatial components (Borcard and Legendre 2002). The components thus represent the whole spatial signal, from the smallest scale (local autocorrelation) to the largest scale, encompassing the whole sampling area, and can be used as explanatory variables (Bauman et al. 2018a) along with environmental variables to understand the organization of benthic assemblages (Corte et al. 2018). While MEMs can represent any spatial signal, linear gradients can be modelled more efficiently using longitude and latitude (Borcard et al. 2011). Thus, the first step before deriving the MEMs consisted in checking with an RDA the existence of a significant linear gradient and successively detrending the dataset, i.e., removing the linear gradient as modelled by longitude and latitude. Based on this procedure, the MEMs we derived represented additional independent spatial components, not correlated with longitude and latitude. The

MEMs were then derived from metric coordinates (WGS84 / UTM33N) by diagonalizing a doubly centered spatial weighting matrix (Bauman et al. 2018b). The spatial matrix is obtained by the product of a connectivity matrix and a weighting matrix. Different graph-based connection schemes (Delaunay triangulation, Gabriel's graph, relative neighborhood graph, and minimum spanning tree) were tested to build the connectivity matrix (Bauman et al. 2018b). Specific weighting functions were also tested to build the weighted matrix (the linear function, the concave-down function (with values from 1 to 10), and the concave-up function (with values from 0.1 to 1) (Bauman et al. 2018a, b)). Overall, 84 models (groups of MEMs) with a maximum of seven MEMs per group, were obtained considering different types of connection schemes and weighted functions. Only positively autocorrelated eigenvectors were retained for each model tested (Borcard et al. 2011). An RDA was run for every model on the residuals of the spatial model of longitude and latitude, and a forward selection with a double-stop criterion (the adjusted  $r^2$  value of the model and a significant p-value,  $\alpha=0.05$ ) (Blanchet et al. 2008) was performed to select the significant MEMs in each model. The model and the corresponding MEMs with the highest adjusted  $r^2$  value were retained. A separate RDA was also performed for both the geomorphological and physicochemical datasets; the hydrodynamic variables were included in the physicochemical dataset (see results). Axes and models were tested for significance, and significant variables were selected by forward selection using a double-stop criterion (Blanchet et al. 2008). Highly correlated variables were removed after being tested for multicollinearity using Spearman's rank correlation coefficients (Borcard et al. 2011). The selected variables from the geomorphological, physicochemical and spatial datasets were then used as explanatory variables for the final RDA model. Variation partitioning (Borcard et al. 1992) was applied to the three groups of variables in the final RDA model to examine their mutual relationships and contribution to explained variance in the final model. Analyses were performed using the "vegan" (Oksanen et al. 2016), "adespatial" (Dray et al. 2023) and "packfor" (Dray et al. 2016) packages for R.

## Results

### Species diversity and identification of reef groups

A total of 90 sessile taxa were recorded throughout the study area (Table S1), with sponges, ascidians, and macroalgae showing the greatest diversity and percent cover. "Sponges" was the most diverse epibenthic category with 31 taxa, followed by "Ascidians" and "Reef builders" with 14 taxa each. "Reef builders" included calcareous red algae (e.g., *Lithophyllum incrustans*, *Mesophyllum* sp., *Lithothamnion* sp.), invertebrates such as vermetids, serpulid polychaetes, encrusting bryozoans, some cnidarians, and a sponge (*Geodia cydonium*) that can deposit and/or contribute to the agglomeration of calcium carbonate particles (Kružić 2014; Turicchia et al. 2022). The "Other algae" category consisted of 10 taxa of erect, coarsely branched, and foliose algae (e.g., *Rhodophyllis* sp. and *Rhodymenia* sp.), while 8 taxa fell into the "Turf" category, which consists of filamentous algae (e.g., *Antithamnion* sp., *Ceramium* sp., *Cladophora* sp., and *Bryopsis* sp.). Four taxa were classified as "Bioeroders" (three sponges: *Cliona viridis*, *C. rhodensis*, *C. celata*, and the bivalve *Rocellaria dubia*). In addition, four taxa were classified as non-reef-builders "Cnidarians" (e.g., *Cereus*

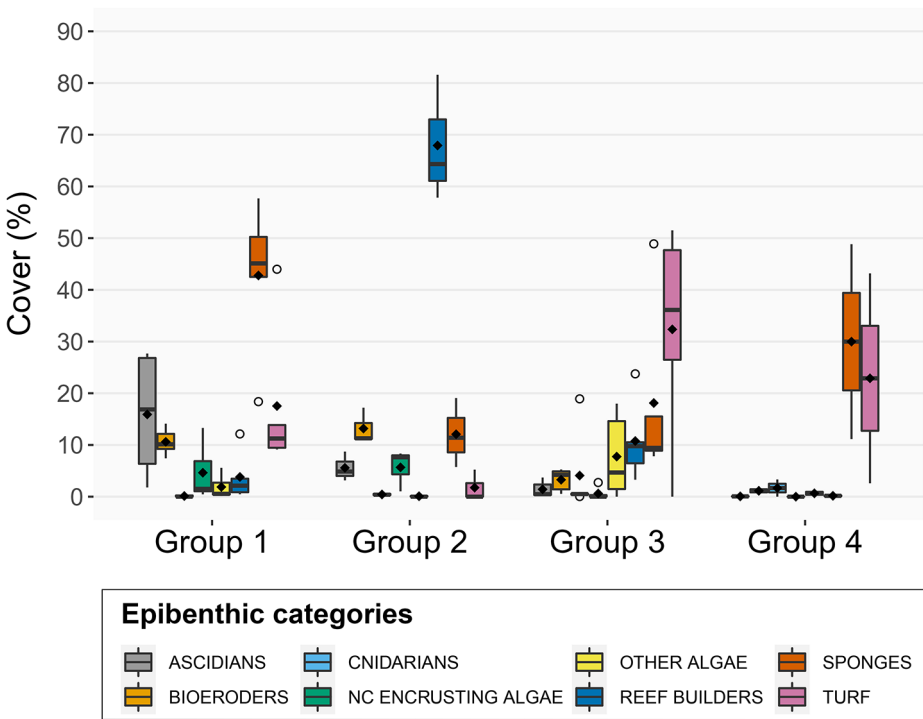


*pedunculatus* and *Parazoanthus axinellae*) and four taxa were classified as “NC encrusting algae” (e.g., *Peyssonnelia* spp.) (Table S1). Despite large differences among sites, the epibenthic categories with the highest average percent cover per site were as follows: “Reef builders” (from 0% to  $81.6 \pm 5.7\%$ ), “Sponges” (from  $5.7 \pm 2.1\%$  to  $57.7 \pm 9.5\%$ ), and “Turf” (from 0% to  $51.5 \pm 5.8\%$ ) (Fig. S1).

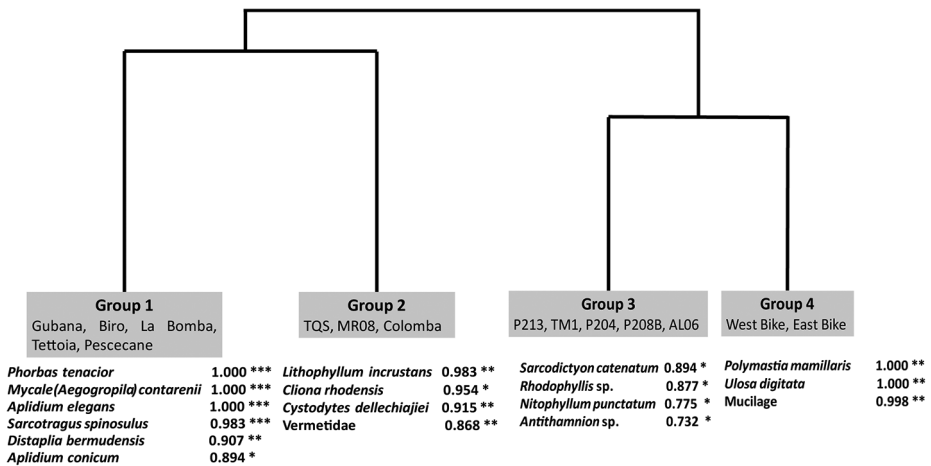
Cluster analysis showed that the reefs could be classified into four groups according to taxa composition and percent cover (Fig. 1, S2a–b, Table 1, and Table S2). All cluster validity indices were consistent with this result. The first group includes five sites off Grado: Biro, Gubana, La Bomba, Pesceccane, Tettoia (Fig. S2a). The second group includes three sites: one closer to the first group (Colomba) and two off Chioggia and the Venice lagoon (TQS, MR08; Fig. S2a). The third group consists of five sites near Chioggia (P204, TM1, AL06, P208B, P213; Fig. S2b), and the fourth group includes two sites about 38 km from the coast (West Bike and East Bike; Fig. S2b). Most sites had a high membership value ( $>0.90$ ) and were clearly assigned to one group, whereas only P213 had a higher degree of fuzziness and showed some degree of membership to two other groups (0.12 for Group 1 and 0.16 for Group 2) (Table S2).

Group 4 was significantly less species-rich (S) and diversified (N1) than the other groups; Group 1 was more diverse (N1) than Group 2 (Fig. S3, Table S3). Although there were significant differences among sites, the groups did not differ from each other in terms of species evenness (N10). The differences between sites and groups were particularly evident when comparing epibenthic categories. Groups 3 and 4 were more similar than Groups 1 and 2 in terms of mean percent cover of epibenthic categories, especially for “Turf” (Fig. 2, Fig. S1). Mean percent cover of “Bioeroders” was significantly higher in Groups 1 and 2 than in the other groups ( $p < 0.05$ ), while “Reef builders” predominated in Group 2 with a mean percent cover ( $67.9 \pm 7.1\%$ ) that was statistically higher than that of the other groups ( $p < 0.01$ ), which again did not differ from each other (Table S4). Mean percent cover of “Ascidians” varied from  $15.9 \pm 4.2\%$  in Group 1,  $5.6 \pm 1.5\%$  in Group 2, and almost absent in Group 3 ( $1.4 \pm 0.8\%$ ) and Group 4 ( $0.05 \pm 0.05\%$ ) (Fig. 2); however, due to the high variability among sites within groups, statistically significant differences were found only between Groups 1 and 3 and between Groups 2 and 3 (Table S4). Cover of “Cnidarians,” “Other algae,” “Sponges,” “NC encrusting algae,” and “Turf” showed significant variability among sites within groups, but did not differ statistically among groups (Table S4). Except for “Cnidarians,” the mean number of taxa by epibenthic category varied greatly among sites within groups ( $p < 0.01$ , Fig. S4, Table S5); nevertheless, some trends are apparent (Figs. S4, S5, Table S5). In particular, “Reef builders” and “Bioeroders” were generally significantly more diverse in Group 2 than in the other groups. “Ascidians” were more diverse in Group 1 and 2 than in Groups 3 and 4. Similarly, “NC encrusting algae” (not found in Group 4) were more diverse in Group 1 and 2 than in Group 3. Finally, “Sponges” seems to be more diverse in Group 1, but no statistically significant differences can be detected, likely due to the high variability within groups.

A total of 20 indicator taxa were identified using the IndVal index (Fig. 3). The maximum IndVal values of the indicator taxa were high ( $>0.70$ ) and statistically significant in all combinations of the groups. The index showed that Groups 1 and 2 shared some eurytopic taxa, such as the sponges *C. viridis* and *Aplysina cavernicola*, the ascidian *Aplidium tabarquensis*, and the red alga *Peyssonnelia rosa-marina*. Two reef-builders, namely *Lithophyllum incrustans* and vermetids, a boring sponge (*C. rhodensis*) and an ascidian (*Cystodytes del-*



**Fig. 2** Boxplots of the percent cover of epibenthic categories in each group of sites. The diamond within the boxplots indicates the mean value. Circles indicate outliers. The epibenthic category boxplots are represented in alphabetic order as in the legend

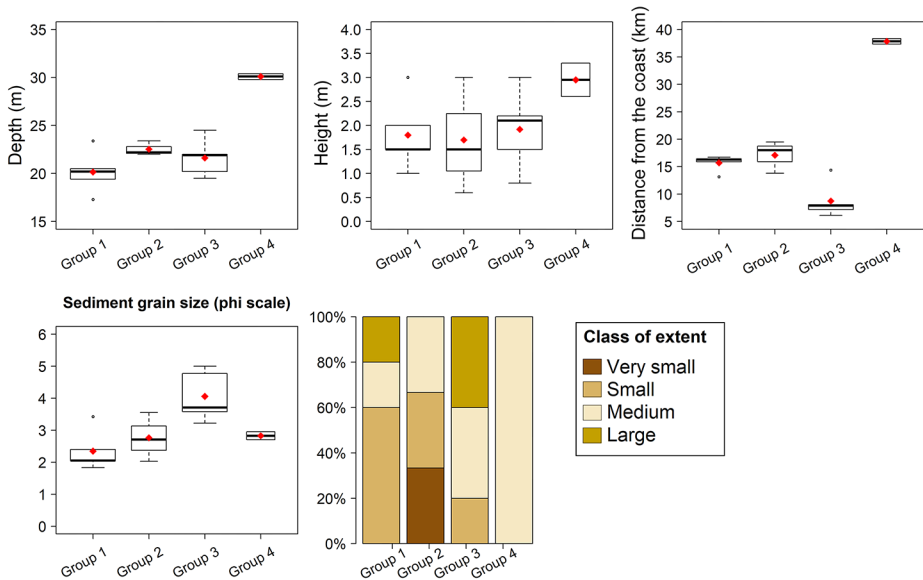


**Fig. 3** Indicator taxa in all divisions of the dendrogram built on the site groups identified with Fuzzy k-Means. Maximum indicator value and significance level of p-value ( $p \leq 0.001$  (\*\*\*);  $\leq 0.01$  (\*\*);  $\leq 0.05$  (\*)) are given for each taxon. Only taxa with significant p-values ( $< 0.05$ ) are shown in the figure

*lechiajei*) distinguished Group 2 from Group 1; conversely, Group 1 was characterized by some sponges and ascidians. Groups 3 and 4 were both characterized by an encrusting sponge: *Dictyonella incisa*. However, Group 3 was characterized mainly by foliose algae such as *Rhodophyllis* sp. and *Nitophyllum punctatum*, by a turf-forming red alga (*Antithamnon* sp.) and by a cnidarian (*Sarcodictyon catenatum*), while Group 4 was characterized by two sponges (*Polymastia mamillaris* and *Ulosa digitata*) and by mucilage (Fig. 3).

### Geomorphological and sedimentary features

The reefs studied also differed in terms of geomorphological features (Table 1; Fig. 4). Group 4 sites were significantly deeper ( $30 \pm 0.3$  m) ( $p < 0.01$ ) and farther from the coast ( $37.9 \pm 0.5$  km) ( $p < 0.05$ ) than those of the other groups (Table S6). On average, Groups 1 and 2 were also significantly farther from the coast ( $p < 0.05$ ) than Group 3, which includes sites near the town of Chioggia ( $8.7 \pm 1.5$  km). The sediments on the seabed were finer near the sites of Group 3, consisting mainly of mud and sandy silt, but they were only significantly different from those of Group 1 ( $p < 0.01$ ). No significant differences were found between groups in terms of average height above the seafloor (Table S6). In Groups 1, 2 and 3, the class of site extent was more heterogeneous than in Group 4, which was represented by only two reefs of medium extent. Group 1 reefs were predominantly small (60%). Group 2 reefs ranged from very small to medium, and Group 3 reefs ranged from small to large (Fig. 4). Mean percent sediment cover of reefs was significantly higher in Groups 3 and 4 than in Groups 1 and 2 (Fig. S6a, b, Table S6), although it differed significantly between sites ( $p < 0.001$ ). High percent cover of mucilage was found only in West Bike ( $41.3 \pm 3.8\%$ ) and East Bike ( $23.7 \pm 3.1\%$ ) (Fig. S6c).



**Fig. 4** Depth (m), height above the seafloor (m), distance from the coast (km), sediment grain size (phi scale), and proportion of class of extent in the four groups of sites. The diamond within the boxplots indicates the mean value. Circles indicate outliers

## Correlations between epibenthic assemblages and abiotic features

Univariate rank correlations showed some monotonic relationships between mean characteristics of epibenthic assemblages and abiotic characteristics of the studied reefs. Species richness correlated positively with Hill's diversity index ( $r_s = 0.78$ ,  $p < 0.001$ ) and negatively with depth and percent sediment cover ( $r_s < -0.6$ ,  $p < 0.01$ ) (Fig. S7). Depth was also negatively correlated with Hill's diversity index ( $r_s = -0.65$ ,  $p < 0.01$ ). Significant positive correlations were found between depth and distance from the coast ( $r_s = 0.61$ ,  $p < 0.05$ ) and between percent sediment cover and sediment grain size on the phi scale ( $r_s = 0.54$ ,  $p < 0.05$ ), indicating higher sediment deposition on reefs with finer sediments. However, percent sediment cover and sediment grain size were not correlated with depth or distance from the coast, suggesting different fluvial influences and sedimentation regimes in the area. Mean percent cover of "Turf" and "Other algae" were positively correlated with each other ( $r_s = 0.85$ ,  $p < 0.001$ ), and the latter was also negatively correlated with distance from the coast ( $r_s = -0.59$ ,  $p < 0.05$ ) (Fig. S8). Sediment grain size was negatively correlated with mean percent cover of "Ascidians" ( $r_s = -0.66$ ,  $p < 0.01$ ), "Sponges" ( $r_s = -0.55$ ,  $p < 0.05$ ), and "Bioeroders" ( $r_s = -0.54$ ,  $p < 0.05$ ), while there is a positive correlation with that of "Turf" ( $r_s = 0.52$ ,  $p < 0.05$ ), "Cnidarians" ( $r_s = 0.57$ ,  $p < 0.05$ ) and "Other algae" ( $r_s = 0.52$ ,  $p < 0.05$ ). Mean percent cover of "Ascidians," "Bioeroders," and "NC encrusting algae" were also negatively correlated with mean percent cover of sediment and positively correlated with each other (Fig. S8). Height above the seafloor was negatively correlated with mean percent cover of "Ascidians" ( $r_s = -0.55$ ,  $p < 0.05$ ) (Fig. S8).

## Effect of spatial and environmental descriptors on the epibenthic assemblage structure

The spatial analysis revealed a significant linear gradient of longitude and latitude ( $p = 0.001$ ) explaining 54% of variance; thus, the dataset was detrended before deriving MEMs. After calculation of the adjusted  $r^2$  and forward selection of the MEMs, only large-scale MEM2 and small-scale MEM5 of the model built with Gabriel's graph connection scheme and the concave-up function with a coefficient value equal to 0.1 were retained (Fig. S9). The best model had an adjusted  $r^2$  of 0.62. MEM2 explained 29% of the variance ( $p = 0.025$ ) and MEM5 33% of variance ( $p = 0.003$ ). The same model explained 71% of the variance when it was run on the non-detrended dataset. MEMs consistently modelled a quite clear spatial pattern with sites closer to the coast of Chioggia and Grado having more similar values at large-scale (MEM2), while MEM5 mostly discriminated sites at a local scale in the south-western part of the study area (i.e., sites TQS and MR08 having high values, and site P208B, P213, West Bike, and East Bike having low values on the MEM) (Fig. S9).

The RDA geomorphological model was run with eight variables (depth, distance from the coast, reef height, sediment grain size, class of extent (dummified) "Very Small," "Small," "Medium," and "Large"). The model had an adjusted  $r^2$  of 0.55, with only the first axis being statistically significant ( $p = 0.003$ ) and explaining 30% of the variance. After removing the most highly correlated variables and performing forward selection, only sediment grain size and distance from the coast were retained, and the adjusted  $r^2$  was reduced to 0.41. The first and second axes explained 25% and 16% of the variance, respectively, and were both statistically significant ( $p = 0.001$  and 0.01) with 999 permutations.

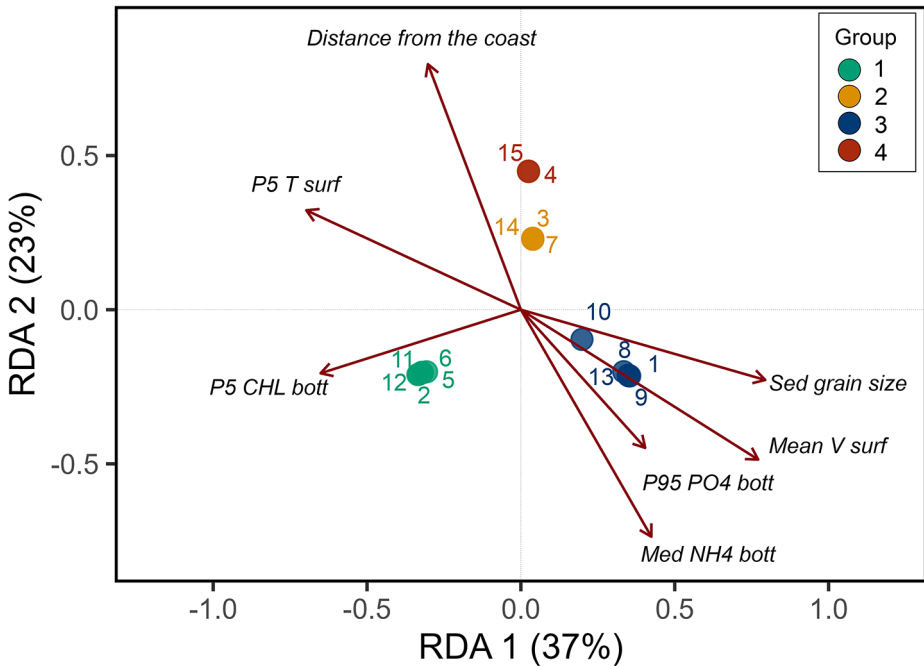
Because all hydrodynamic variables (annual Mean\_V, Max\_V, Mean\_KE at the sea surface and at the seafloor) were highly correlated with each other ( $r_s > 0.9$ ), RDA was not performed for this subset of variables and only Mean\_V at the sea surface was retained, because it was less correlated with the other variables, and included in the physicochemical dataset. The RDA model for the physicochemical dataset was built with forty-three variables (annual Med, P5, and P95 of CHL, T, SAL, NH4, NO3, PO4, OXY at the sea surface and bottom, and annual Mean\_V at the surface). The model had an adjusted  $r^2$  of 0.99; 44% of the variance was explained by the first axis ( $p=0.02$ ), while the second axis explained 34% of the variance after 999 permutations ( $p=0.03$ ). After reducing multicollinearity, the following variables were retained: Mean\_V and P5\_T on the surface and P5\_CHL, Med\_NH4, and P95\_PO4 on the bottom. The model had an adjusted  $r^2$  of 0.65; both the first and second axes were statistically significant ( $p=0.001$  and 0.01) and explained 31% and 20% of the variance, respectively.

Variation partitioning performed on the final RDA model run with the variables selected in the three RDA subsets, showed that a high fraction of the variance was jointly explained by the three datasets (Table S7). The spatial and physicochemical datasets shared the highest joint contribution ( $r^2$  adj.= 0.48). The unique contribution of each single dataset to the explained variance of the model was negligible (Table S7). According to these results, since the information brought by the three datasets was highly overlapped, we decided to run the final RDA model only with the geomorphological and physicochemical variables that shared the lowest fraction of variance ( $r^2$  adj.= 0.09) and enables us to discuss the observed biotic patterns in terms of environmental factors. The adjusted  $r^2$  of the final RDA model was 0.76; the first axis explained 37% ( $p=0.001$ ), whereas the second axis explained 23% of the variance after 999 permutations ( $p=0.01$ ) (Fig. 5). The RDA plot showed that P5\_CHL at the bottom and P5\_T at the surface tended to increase toward Group 1 sites; geomorphological variables such as Mean\_V at the surface and sediment grain size, as well as P95\_PO4 and Med\_NH4 at the bottom, tended to increase toward Group 3 sites. Distance from the coast and, to a lesser extent, P5\_T at the surface tend to increase toward Group 2 and 4 sites, while P95\_PO4 and Med\_NH4 at the bottom tend to decrease (Fig. 5).

## Discussion

The present study has shed further light on the biogenic reefs of the NAS, by partially confirming previous findings and clarifying some ecological aspects related to the distribution of epibenthic assemblages. For the first time, reefs at about 38 km offshore were considered; very little information was previously available on these bioconstructions (Nicoletti et al. 2015).

The results showed that the biogenic reefs in the NAS are very heterogeneous in terms of epibenthic assemblages and show a strong correlation with some environmental variables (i.e., distance from the coast, nutrients, hydrodynamic conditions, sediment cover, and sediment grain size). The structure of the studied communities is consistent with previous reports and confirms the overall dominance of filter-feeding organisms (e.g., sponges, ascidians), turf-forming algae, and encrusting calcareous algae with a distinct distribution pattern (Molin et al. 2003, 2010; Casellato and Stefanon 2008; Curiel and Molin 2010; Curiel et al. 2010, 2012, 2014, 2017; Ponti et al. 2011; Miotti et al. 2014; Falace et al. 2015; Fava et al.



**Fig. 5** RDA model of Fuzzy k-Means membership grades with the datasets of geomorphological and physicochemical variables. Adjusted  $r^2$  of the model=0.76 (37% of the variance explained by the first axis and 23% by the second axis). P5\_CHL bott: fifth percentile of chlorophyll at the sea bottom; P5\_T surf: fifth percentile of sea surface temperature; P95\_PO4 bott: ninety-fifth percentile of phosphates at the sea bottom; Med\_NH4 bott: median of ammonium at the sea bottom; Mean\_V surf: mean current velocity at the sea surface; Sed grain size: sediment grain size. ID number of sites as in Table 1

2016; Nesto et al. 2020). The results also confirmed striking differences with assemblages growing on typical Mediterranean coralligenous reefs (Ballesteros 2006; Ponti et al. 2011; Falace et al. 2015; Ingrosso et al. 2018), as representative taxa such as hydrozoans, gorgonians, the green algae *Flabellia petiolata* and *Halimeda tuna*, and erect bryozoans were not recorded in our sampling, while encrusting bryozoans had a comparatively low percent cover ( $<0.33 \pm 0.24\%$ ). With few exceptions, *Lithophyllum incrustans* and *Lithothamnion* sp. are the most abundant calcareous algae on NAS biogenic reefs, while *Lithophyllum stictiforme* and *Mesophyllum* spp. are generally the predominant taxa on typical Mediterranean coralligenous reefs (Ballesteros 2006). The biogenic reefs of the NAS also show some differences with those of the southern Adriatic continental shelf in terms of the composition of the main taxa (Bracchi et al. 2017; Piazzzi et al. 2019). In this respect, the present work confirms the specificity of the epibenthic assemblages inhabiting the reefs of the NAS (Ponti et al. 2011; Falace et al. 2015).

Cluster analysis provided clear evidence of the wide variability of reefs. Four distinct groups of sites were identified, and only one site (P213) showed some degree of membership with the other groups. The distribution pattern of the benthic communities seems to be mainly determined by specific environmental characteristics of the area, as shown by the RDA model results. Sites near Chioggia (Group 3) are characterized by more stressful environmental conditions. Here, the main influence of the rivers and the Venice Lagoon

results in higher nutrient loading, stronger water flow, higher suspended sediment load and limited water transparency, affecting the biotic community structure and allowing the dominance of turf-forming algae. This is also confirmed by higher percent cover of sediment and stress-tolerant species associated with turf-forming algae, such as the encrusting sponge *Dictyonella incisa* and foliose erect algae (e.g., *Rhodymenia* sp.), as observed by Curiel et al. (2014). Conversely, sites relatively far from the coast (Group 2) with less energetic hydrodynamic conditions, lower nutrient loading, and less sedimentation appear to be characterized by more stable conditions, allowing the dominance of encrusting calcareous red algae. Indeed, several studies have shown that nutrient enrichment and sedimentation strongly alter coralligenous assemblages by reducing bio-builder taxa and increasing ephemeral algae (Piazzi et al. 2011, 2012; Montefalcone et al. 2017). Colonial ascidians such as *Polycitor adriaticus*, *Aplidium conicum*, and sponges such as *Tedania (Tedania) anhelans*, which are sensitive to fine sediments that may occlude their filtration systems (Naranjo et al. 1996; Molin et al. 2003; Turicchia et al. 2021), are also well represented at Group 2 sites. These results are consistent with previous observations by other authors who reported, for example, the presence of *P. adriaticus* and *A. conicum* on reefs with little or no hydrodynamic turbulence and particles in the water column and at greater distances from the coast (Ponti and Mastrototaro 2006; Ponti et al. 2011; Miotti et al. 2014; Falace et al. 2015). Interestingly, bioeroders are particularly abundant at Group 2 sites, confirming their association with reef builders and the presence of ongoing bioconstruction and bioerosion processes that are critical for maintaining reef habitats and their diversity (Turicchia et al. 2022). Group 1 reefs are instead dominated by sponges and ascidians, with a high percent cover of “Turf” ( $17.5 \pm 6.7\%$ ) and can be considered as an intermediate state in terms of epibenthic assemblages between nearshore (Group 3) and relatively offshore reefs (Group 2). Such pattern was also confirmed by the spatial analysis (MEM) that showed a significant linear gradient modelled by longitude and latitude, explaining a high portion of variance and suggesting a strong influence of distance from the coast and river inputs on the presence and abundance of epibenthic assemblages. The high collinearity of the spatial components with the physicochemical variables gives further confirmation that environmental variables are strongly dependent on the spatial structure and shape the epibenthic assemblages on a coastal-offshore gradient. The residual spatial pattern was described by only two significant MEMs, probably due to the simple sampling design with a limited number of sites.

However, although our results confirm the habitat typologies and the role of the coastal-offshore gradient in shaping epibenthic assemblages, as previously shown by Falace et al. (2015), distance from the coast did not contribute to explain fully the observed species distribution patterns. In particular, compared to the results of Falace et al. (2015), a fourth group was detected by the clustering analysis comprising the two new study reefs, located farthest from the coast (West Bike and East Bike), and that have peculiar conditions. Based on the predictive model developed by Falace et al. (2015), it was expected that these two reefs would most likely host epibenthic assemblages dominated by reef builders. Conversely, the present study has shown that they do not have the same epibenthic assemblages as Group 2 sites, but are more similar to Group 3 sites, dominated by turf-forming algae and some sponges, while reef builders, ascidians, and NC encrusting algae are rare. The species richness and Hill’s diversity index of Group 4 are significantly lower than those of the other groups. This condition can most likely be explained by the degree of isolation of West Bike and East Bike, which may limit larval recruitment. In addition, the high percent sediment

cover measured on these reefs suggests that other local factors, such as human activities and possible seasonal variation in local water circulation, may limit the settlement and recruitment of benthic species, increasing sedimentation and by reducing light penetration at very deep sites (~30 m). Remarkably, West Bike was the only reef to host the sponge *Polymastia boletiformis*, which forms a large and dense population there (foreground in Fig. S2b). The presence of *P. boletiformis*, generally considered to be a North Atlantic species (Plotkin et al. 2011), represents an important finding, as there have been no records in the northern Adriatic since the first and only report (as *P. robusta*) in the late nineteenth century by von Lendenfeld (1896).

Illegal fishing, vessel traffic, diving, commercial fishing near reefs, and marine debris are among the main human activities that can affect benthic communities in the area (Falace et al. 2015; Melli et al. 2017; Tonin 2018; Moschino et al. 2019; Shabtay et al. 2019). For example, high densities of fishing nets covering benthic organisms on various reefs, carried by sea currents from nearby shellfish farms or lost/deposited by fishermen have been reported (Melli et al. 2017; Moschino et al. 2019). The occurrence of certain species may be thus the result of either environmental changes and/or direct human activities. However, partitioning the effects of these two factors is challenging, because information on small-scale environmental pressures and human impacts on species is not available. In addition, various biological and ecological processes (e.g., reproductive timing, larval and dispersal processes, settlement and recruitment processes, intra- and interspecific interactions) in combination with other processes could play an important role in maintaining species diversity at different spatial scales (Carson et al. 2010; Dawson et al. 2014; Fava et al. 2016; Costantini et al. 2018). Local hydrodynamic conditions, affecting both larval dispersal and their ability to find suitable substrates, may account for the large variability in reproductive success or mortality associated with pre- and post-settlement processes. Bandelj et al. (2020) demonstrated, for the study area, that species with different pelagic larval duration (PLD) follow different dispersal dynamics, and that passive dispersal by currents has a greater relative importance than geographic distance in predicting the beta diversity of biogenic reefs. The results of this study also offer some possible explanations for some of the observed patterns. For example, despite similar epibenthic assemblages, the Group 2 sites appear to be divided into two widely separated reef subgroups located in the northern and southern parts of the study area. Bandelj et al. (2020) showed that these sites are well connected at PLDs of 1 day and 3 days thanks to water circulation and the presence of other reefs in the middle, which were not considered in the present study. Therefore, different aspects and local factors need to be taken into account when developing management plans and conservation measures, as well as the monitoring of the characteristics and ecological status of biogenic reefs in the NAS.

Currently, there are only three Natura 2000 (N2K) sites in the study area: the “Trezze San Pietro and Bardelli” (Site code: IT3330009) in the north, the “Tegnùe di Chioggia” (Site code: IT3250047) in the south and the “Tegnùe di Porto Falconera” (Site code: IT3250048) in front of the town of Caorle, with a total area of about 5600 ha. These areas contain reefs that are strategic for maintaining cross-scale connectivity of biogenic reefs, but many other sites that harbor very rare species (e.g., *P. boletiformis* in West Bike) or act as source for species dispersal, according to Bandelj et al. 2020, are currently not protected. Moreover, recent projects (Interreg Italy-Croatia project ECOSS, and Interreg Italy-Croatia project CASCADE) reported the absence or inadequacy of management plans and suggested some



monitoring activities to be carried out on a regular basis (Gianni et al. 2022). The existing protection measures restrict some activities (e.g., trawling, anchoring), but do not reduce the widespread anthropogenic pressures, such as high nutrient load, sedimentation, and old ghost nets; the latter affecting reefs in the Tegnù di Chioggia N2K site (Melli et al. 2017; Moschino et al. 2019). Since physicochemical variables have a stronger influence on reef biodiversity, as shown in this study, a change in water quality due to increased nutrients and chemical pollution from rivers and coastal discharges, may result in changes of the benthic assemblages, reducing the presence of highly structured communities even on off-shore reefs, with higher biodiversity and stress-sensitive species. Policies to conserve these habitats must, therefore, not disregard the proper management of human activities on land and the correct treatment of wastewater that reaches the sea. Moreover, specific measures to enhance NAS reefs conservation should focus on enforcing the activity regulations and improving surveillance of these areas supported by funding from national and local governments. An ecosystem-based approach that considers the development of joint management plans between several N2K sites, as conceived by the Habitat Directive (EC 1992; Bastmeijer 2018), and for neighboring areas, is strongly recommended. This is especially true due to the complexity of some territories and the multiplicity of human interests that require a more comprehensive management approach, especially regarding the inshore areas. A stronger cooperation among different stakeholders, which include dive centers, scientists, and fishermen, is also needed to share knowledge, best practices, and commitment to the NAS reef protection (Bertzky and Stoll-Kleemann 2009; Cvitanovic et al. 2014; Gianni et al. 2022).

In conclusion, the present work has highlighted the distinctiveness of the epibenthic assemblages inhabiting the NAS reefs, provided useful knowledge to refine the ecological quality assessment (Piazzi et al. 2023), and emphasized the need for better protection of these fragile habitats. Although the biogenic reefs investigated in this study probably represent only a small portion of the reefs in the NAS (Gordini et al. 2012), our results complement those of previous studies and represent the entire natural diversity of epibenthic assemblages in the area. However, further field studies are needed to better investigate the ecological dynamics and benthic communities of biogenic reefs that are very distant from the coast and have been poorly studied. In addition, a detailed and updated map of the distribution of the reefs, including the eastern part of the NAS, in combination with information on species genetic structure, inter-reef connectivity, and local human impacts are essential to achieve a reliable management of these marine habitats in the NAS.

**Supplementary Information** The online version contains supplementary material available at <https://doi.org/10.1007/s10531-023-02654-3>.

**Acknowledgements** The authors thank all the researchers of the ECHO group of the National Institute of Oceanography and Applied Geophysics for their suggestions and help at different stages of the study. We thank Gianluca Franceschini, Lisa Faresi, Alessandra Bellucci, Rossano Tiozzo, and Nino Caressa for their valuable help in the fieldwork. We also thank Dr. Chris Jenkins from the University of Colorado for providing data on the sediment type of the Adriatic seafloor.

**Authors' contributions** MA, VB, AF, and MP contributed to the study conception and design. Data elaboration, formal analysis, and visualization were performed by FG, ET, VB, AF, and MP. Fieldwork was performed by ET, FR, MP, MA, SK, FC, and SC. Epibenthic species were identified by ET, AF, SK, BC, LP, SP, FR, MP, and AC. Datasets were provided by ET, SQ, VB and MP. Supervision of the work was done by MA, VB, AF and MP. Funds were acquired by MA, AF and CS. The first draft of the manuscript was written by FG and all authors contributed to editing and reviewing it. All authors read and approved the final version of the manuscript.

**Funding** This research was supported by the Research Projects of National Interest (PRIN), funded by the Italian Ministry of University and Research: “Reef ReseArch —Resistance and Resilience of Adriatic Mesophotic Biogenic Habitats to Human and Climate Change Threats” (Call 2015; Prot. 2015J922E4; 2017–2020). The manuscript was finalized during the participation of MP to the EU funded project “CoAStal and marine waters integrated monitoring systems for ecosystems protection and management” (CASCADE; Interreg V-A Italy-Croatia CBC Programme 2014–2020, ID Number 10255941, from 01.01.2020 to 31.12.2022), and the participation of VB to the EU funded project “Ecological Observing System in the Adriatic Sea: oceanographic observations for biodiversity” (ECOSS; Interreg V-A Italy-Croatia CBC program 2014–2020, ID Number 10042301, from 01.01.2019 to 30.06.2021). FG and VB acknowledge financial support from PNRR MUR in the framework of the “National Biodiversity Future Center - NBFC” (CUP F83B22000050001). FC and MP also acknowledge financial support from PNRR MUR project ECS\_00000033\_ECOSISTER. This work was part of ET’s Ph.D. thesis at the University of Bologna. Open access funding provided by Istituto Nazionale di Oceanografia e di Geofisica Sperimentale within the CRUI-CARE Agreement.

**Data Availability** The datasets generated and analyzed during the current study are available from the corresponding authors on reasonable request.

## Statements and Declarations

**Conflict of interest** The authors have no competing interests to declare that are relevant to the content of this article.

**Open Access** This article is licensed under a Creative Commons Attribution 4.0 International License, which permits use, sharing, adaptation, distribution and reproduction in any medium or format, as long as you give appropriate credit to the original author(s) and the source, provide a link to the Creative Commons licence, and indicate if changes were made. The images or other third party material in this article are included in the article’s Creative Commons licence, unless indicated otherwise in a credit line to the material. If material is not included in the article’s Creative Commons licence and your intended use is not permitted by statutory regulation or exceeds the permitted use, you will need to obtain permission directly from the copyright holder. To view a copy of this licence, visit <http://creativecommons.org/licenses/by/4.0/>.

## References

- Airoldi L (1998) Roles of disturbance, sediment stress, and substratum retention on spatial dominance in algal turf. *Ecology* 79:2759–2770. <https://doi.org/10.1890/0012-9658>
- Airoldi L (2000) Responses of algae with different life histories to temporal and spatial variability of disturbance in subtidal reefs. *Mar Ecol Prog Ser* 195:81–92. <https://doi.org/10.3354/meps195081>
- Anderson MJ, Robinson J (2001) Permutation tests for linear models. *Aust N Z J Stat* 43:75–88. <https://doi.org/10.1111/1467-842x.00156>
- Anderson M, Gorley RN, Clarke RK (2008) *PERMANOVA + for primer: guide to software and statistical methods*. PRIMER-E Ltd, Plymouth, UK. [http://updates.primer-e.com/primer7/manuals/PERMANOVA+\\_manual.pdf](http://updates.primer-e.com/primer7/manuals/PERMANOVA+_manual.pdf)
- Aubry FB, Berton A, Bastianini M et al (2004) Phytoplankton succession in a coastal area of the NW Adriatic, over a 10-year sampling period (1990–1999). *Cont Shelf Res* 24:97–115. <https://doi.org/10.1016/j.csr.2003.09.007>
- Balata D, Piazzì L, Cecchi E, Cinelli F (2005) Variability of Mediterranean coralligenous assemblages subject to local variation in sediment deposition. *Mar Environ Res* 60:403–421. <https://doi.org/10.1016/j.marenvres.2004.12.005>
- Ballesteros E (2006) Mediterranean coralligenous assemblages: a synthesis of present knowledge. In: Gibson RN, Atkinson RJA, Gordon JDM (eds) *Oceanography and Marine Biology: an annual review*. Taylor&Francis Group, pp 123–195. <https://doi.org/10.1201/9781420050943>
- Bandelj V, Solidoro C, Curiel D et al (2012) Fuzziness and heterogeneity of benthic metacommunities in a complex transitional system. *PLoS ONE* 7:e52395. <https://doi.org/10.1371/journal.pone.0052395>
- Bandelj V, Solidoro C, Laurent C et al (2020) Cross-scale connectivity of macrobenthic communities in a patchy network of habitats: the mesophotic biogenic habitats of the northern Adriatic Sea. *Estuar Coast Shelf Sci* 245:106978. <https://doi.org/10.1016/j.ecss.2020.106978>

- Bastmeijer K (2018) The ecosystem approach for the marine environment and the position of humans: lessons from the EU Natura 2000 regime. In: Langlet D, Rayfuse R (eds) *The ecosystem approach in ocean planning and governance*. Brill Nijhoff, Leiden, pp 195–220. [https://doi.org/10.1163/9789004389984\\_008](https://doi.org/10.1163/9789004389984_008)
- Bauman D, Drouet T, Dray S, Vleminckx J (2018a) Disentangling good from bad practices in the selection of spatial or phylogenetic eigenvectors. *Ecography* 41:1638–1649. <https://doi.org/10.1111/ecog.03380>
- Bauman D, Drouet T, Fortin M-J, Dray S (2018b) Optimizing the choice of a spatial weighting matrix in eigenvector-based methods. *Ecology* 99:2159–2166. <https://doi.org/10.1002/ecy.2469>
- Bertzky M, Stoll-Kleemann S (2009) Multi-level discrepancies with sharing data on protected areas: what we have and what we need for the global village. *J Environ Manage* 90:8–24. <https://doi.org/10.1016/j.jenvman.2007.11.001>
- Bezdek JC (2013) *Pattern recognition with fuzzy objective function algorithms*. Springer Sci Bus Media. <https://doi.org/10.1007/978-1-4757-0450-1>
- Blanchet FG, Legendre P, Borcard D (2008) Forward selection of explanatory variables. *Ecology* 89:2623–2632. <https://doi.org/10.1890/07-0986.1>
- Borcard D, Legendre P (2002) All-scale spatial analysis of ecological data by means of principal coordinates of neighbour matrices. *Ecol Model* 153:51–68. [https://doi.org/10.1016/S0304-3800\(01\)00501-4](https://doi.org/10.1016/S0304-3800(01)00501-4)
- Borcard D, Legendre P, Drapeau P (1992) Partialling out the spatial component of ecological variation. *Ecology* 73:1045–1055. <https://doi.org/10.2307/1940179>
- Borcard D, Gillet F, Legendre P (2011) *Numerical ecology with R*. Springer New York, New York, NY. <https://doi.org/10.1007/978-1-4419-7976-6>
- Bostock H, Jenkins C, Mackay K et al (2018) Distribution of surficial sediments in the ocean around New Zealand/Aotearoa. Part B: Continental shelf. *New Zeal J Geol Geop* 62:24–45. <https://doi.org/10.1080/00288306.2018.1523199>
- Boyd PW, Brown CJ (2015) Modes of interactions between environmental drivers and marine biota. *Front Mar Sci* 2:9. <https://doi.org/10.3389/fmars.2015.00009>
- Bracchi VA, Basso D, Marchese F et al (2017) Coralligenous morphotypes on subhorizontal substrate: a new categorization. *Cont Shelf Res* 144:10–20. <https://doi.org/10.1016/j.csr.2017.06.005>
- Brown CJ, O'Connor MI, Poloczanska ES et al (2016) Ecological and methodological drivers of species' distribution and phenology responses to climate change. *Glob Change Biol* 22:1548–1560. <https://doi.org/10.1111/gcb.13184>
- Cao Y, Hawkins CP (2019) Weighting effective number of species measures by abundance weakens detection of diversity responses. *J Appl Ecol* 56:1200–1209. <https://doi.org/10.1111/1365-2664.13345>
- Carella S, Gordini E, Marocco R, Tunis G (2001) Caratteri geomorfologici degli affioramenti rocciosi del golfo di Trieste (Adriatico Settentrionale). *Gortania. Atti Museo Friulano di Storia Naturale* 23:5–29. <http://hdl.handle.net/11368/1701949>
- Carrier-Belleau C, Drolet D, McKindsey CW, Archambault P (2021) Environmental stressors, complex interactions and marine benthic communities' responses. *Sci Rep* 11:4194. <https://doi.org/10.1038/s41598-021-83533-1>
- Carson HS, López-Duarte PC, Rasmussen L et al (2010) Reproductive timing alters population connectivity in marine metapopulations. *Curr Biol* 20:1926–1931. <https://doi.org/10.1016/j.cub.2010.09.057>
- Casellato S, Stefanon A (2008) Coralligenous habitat in the northern Adriatic Sea: an overview. *Mar Ecol* 29:321–341. <https://doi.org/10.1111/j.1439-0485.2008.00236.x>
- Chimienti G, Stithou M, Dalle Mura I et al (2017) An explorative assessment of the importance of Mediterranean coralligenous habitat to local economy: the case of recreational diving. *J Environ Account Manag* 5:315–325. <https://doi.org/10.5890/jeam.2017.12.004>
- Corte GN, Gonçalves-Souza T, Checon HH et al (2018) When time affects space: dispersal ability and extreme weather events determine metacommunity organization in marine sediments. *Mar Environ Res* 136:139–152. <https://doi.org/10.1016/j.marenvres.2018.02.009>
- Costantini F, Ferrario F, Abbiati M (2018) Chasing genetic structure in coralligenous reef invertebrates: patterns, criticalities and conservation issues. *Sci Rep* 8:5844. <https://doi.org/10.1038/s41598-018-24247-9>
- Crain CM, Bertness MD (2006) Ecosystem engineering across environmental gradients: implications for conservation and management. *Bioscience* 56:211–218.
- Curriel D, Molin E (2010) Comunità fitobentoniche di substrato solido. In: Agenzia Regionale per la Prevenzione e protezione Ambientale del Veneto-ARPAV (ed) *Le teggùe dell'alto Adriatico: valorizzazione della risorsa marina attraverso lo studio di aree di pregio ambientale*. ARPAV, Venice, pp 62–79. [http://www.studioemilianomolin.it/biblio/pubbl.LE%20TEGNUE%20ALTO%20ADRIATICO\\_FITO.pdf](http://www.studioemilianomolin.it/biblio/pubbl.LE%20TEGNUE%20ALTO%20ADRIATICO_FITO.pdf)
- Curriel D, Rismondo A, Miotti C et al (2010) Le macroalghe degli affioramenti rocciosi (teggùe) del litorale Veneto. *Lav Soc Ven Sc Nat* 35:39–55. [http://www.svsn.it/wp-content/uploads/2018/11/Vol\\_35\\_svsn.pdf#page=41](http://www.svsn.it/wp-content/uploads/2018/11/Vol_35_svsn.pdf#page=41)

- Curiel D, Falace A, Bandelj V et al (2012) Species composition and spatial variability of macroalgal assemblages on biogenic reefs in the northern Adriatic Sea. *Bot Mar* 55:625–638. <https://doi.org/10.1515/bot-2012-0166>
- Curiel D, Miotti C, Checchin E et al (2014) Biodiversità macroalgale e gradienti ecologici degli affioramenti rocciosi del litorale Veneto. *Boll Mus St Nat Venezia* 65:5–21. <http://hdl.handle.net/11368/2843761>
- Curiel D, Miotti C, Checchin E et al (2017) Patterns of diversity of macroalgal assemblages on biogenic outcrops in the northern Adriatic Sea. *Boll Mus St Nat Venezia* 67:9–20. [https://msn.visitmuve.it/wp-content/uploads/2017/07/Boll672017\\_2.pdf](https://msn.visitmuve.it/wp-content/uploads/2017/07/Boll672017_2.pdf)
- Cvitanovic C, Fulton CJ, Wilson SK et al (2014) Utility of primary scientific literature to environmental managers: an international case study on coral-dominated marine protected areas. *Ocean Coast Manage* 102:72–78. <https://doi.org/10.1016/j.ocecoaman.2014.09.003>
- Darling ES, McClanahan TR, Côté IM (2013) Life histories predict coral community disassembly under multiple stressors. *Glob Change Biol* 19:1930–1940. <https://doi.org/10.1111/gcb.12191>
- Dawson MN, Hays CG, Grosberg RK, Raimondi PT (2014) Dispersal potential and population genetic structure in the marine intertidal of the eastern North Pacific. *Ecol Monogr* 84:435–456. <https://doi.org/10.1890/13-0871.1>
- De Cáceres M, Legendre P (2009) Associations between species and groups of sites: indices and statistical inference. *Ecology* 90:3566–3574. <https://doi.org/10.1890/08-1823.1>
- Donda F, Forlin E, Gordini E et al (2015) Deep-sourced gas seepage and methane-derived carbonates in the northern Adriatic Sea. *Basin Res* 27:531–545. <https://doi.org/10.1111/bre.12087>
- Dray S, Legendre P, Peres-Neto PR (2006) Spatial modelling: a comprehensive framework for principal coordinate analysis of neighbour matrices (PCNM). *Ecol Model* 196:483–493. <https://doi.org/10.1016/j.ecolmodel.2006.02.015>
- Dray S, Legendre P, Blanchet G (2016) packfor: forward Selection with permutation (Canoco p. 46). R package version 0.0–8/r136. <http://R-Forge.R-project.org/projects/sedar>
- Dray S, Bauman D, Blanchet G et al (2023) adespatial: multivariate multiscale spatial analysis. R package version 0.3–21. <https://CRAN.R-project.org/package=adespatial>
- Dufrène M, Legendre P (1997) Species assemblages and indicator species: the need for a flexible asymmetrical approach. *Ecol Monogr* 67:345–366. [https://doi.org/10.1890/0012-9615\(1997\)067\[0345:SAAI\]2.0.CO;2](https://doi.org/10.1890/0012-9615(1997)067[0345:SAAI]2.0.CO;2)
- Erfemeijer PL, Riegl B, Hoeksema BW, Todd PA (2012) Environmental impacts of dredging and other sediment disturbances on corals: a review. *Mar Pollut Bull* 64:1737–1765. <https://doi.org/10.1016/j.marpolbul.2012.05.008>
- European Commission (1992) Council directive 92/43/EEC of May 21, 1992 on the conservation of natural habitats and of wild fauna and flora. *Off J Eur Union* 206:7–50. <https://eur-lex.europa.eu/legal-content/EN/TXT/?uri=celex%3A31992L0043>
- Falace A, Kaleb S, Curiel D et al (2015) Calcareous bio-concretions in the northern Adriatic Sea: habitat types, environmental factors that influence habitat distributions, and predictive modeling. *PLoS ONE* 10:e0140931. <https://doi.org/10.1371/journal.pone.0140931>
- Farella G, Tassetti AN, Menegon S et al (2021) Ecosystem-based MSP for enhanced fisheries sustainability: an example from the northern Adriatic (Chioggia—Venice and Rovigo, Italy). *Sustainability* 13:1211. <https://doi.org/10.3390/su13031211>
- Fava F, Ponti M, Abbiati M (2016) Role of recruitment processes in structuring coralligenous benthic assemblages in the northern Adriatic continental shelf. *PLoS ONE* 11:e0163494. <https://doi.org/10.1371/journal.pone.0163494>
- Ferraro MB, Giordani P, Serafini A (2019) felust: an R package for fuzzy clustering. *R J* 11(1):198. <https://journal.r-project.org/archive/2019/RJ-2019-017/RJ-2019-017.pdf>
- Fortibuoni T, Canese S, Bortoluzzi G et al (2020a) Bathymetry data (GeoTIFF grid format) of the northern Adriatic teggù di chioggia site collected in 2014–2015 for the DeFishGear project. <https://doi.org/10.26022/IEDA/329815>. Integrated Earth Data Applications (IEDA)
- Fortibuoni T, Canese S, Bortoluzzi G et al (2020b) Bathymetry data (GeoTIFF image format) of the northern Adriatic Teggù di Chioggia site collected in 2014–2015 for the DeFishGear project. <https://doi.org/10.26022/IEDA/329816>. Integrated Earth Data Applications (IEDA)
- Galli G, Solidoro C, Lovato T (2017) Marine heat waves hazard 3D maps and the risk for low motility organisms in a warming Mediterranean Sea. *Front Mar Sci* 4:136. <https://doi.org/10.3389/fmars.2017.00136>
- Garrabou J, Gómez-Gras D, Medrano A et al (2022) Marine heatwaves drive recurrent mass mortalities in the Mediterranean Sea. *Glob Change Biol* 28:5708–5725. <https://doi.org/10.1111/gcb.16301>
- Gianni F, Manea E, Cataletto B et al (2022) Are we overlooking Natura 2000 sites? Lessons learned from a transnational project in the Adriatic Sea. *Front Mar Sci* 9:1070373. <https://doi.org/10.3389/fmars.2022.1070373>

- Gordini E, Saul C (2020) Bathymetry data (GeoTIFF grid format) of the northern-most Adriatic area: Inter-reg Ita-Slo 2007–2013 TRECORALA Project. <https://doi.org/10.26022/IEDA/329903>. Integrated Earth Data Applications (IEDA)
- Gordini E, Falace A, Kaleb S et al (2012) Methane-related carbonate cementation of marine sediments and related macroalgal coralligenous assemblages in the northern Adriatic Sea. In: Harris PT, Baker EK (eds) Seafloor geomorphology as benthic habitat. Elsevier, London, pp 185–200. ISBN 978-0-12-385140-6. <https://doi.org/10.1016/B978-0-12-385140-6.00009-8>
- Harrell FE, Dupont C (2019) Hmisc: Harrell miscellaneous. R package version 4.1-1. R Found. Stat. Comput. <https://CRAN.R-project.org/package=Hmisc>
- Ingrosso G, Abbiati M, Badalamenti F et al (2018) Chapter Three - Mediterranean bioconstructions along the Italian coast. In: Sheppard C (ed) Advances in Marine Biology. Academic Press, pp 61–136. <https://doi.org/10.1016/bs.amb.2018.05.001>
- Irving AD, Balata D, Colosio F et al (2009) Light, sediment, temperature, and the early life-history of the habitat-forming alga *Cystoseira barbata*. Mar Biol 156:1223–1231. <https://doi.org/10.1007/s00227-009-1164-7>
- Jeffries MA, Lee CM (2007) A climatology of the northern Adriatic Sea's response to bora and river forcing. J Geophys Res Oceans 112(C3). <https://doi.org/10.1029/2006JC003664>
- Jones NP, Figueiredo J, Gilliam DS (2020) Thermal stress-related spatiotemporal variations in high-latitude coral reef benthic communities. Coral Reefs 39:1661–1673. <https://doi.org/10.1007/s00338-020-01994-8>
- Kružić P (2014) Bioconstructions in the Mediterranean: present and future. In: Goffredo S, Dubinsky Z (eds) The Mediterranean Sea: its history and present challenges. Springer Netherlands, Dordrecht, pp 435–447. [https://doi.org/10.1007/978-94-007-6704-1\\_25](https://doi.org/10.1007/978-94-007-6704-1_25)
- Kuzmić M, Janeković I, Book JW et al (2006) Modeling the northern Adriatic double-gyre response to intense bora wind: a revisit. J Geophys Res Oceans 111(C3). <https://doi.org/10.1029/2005JC003377>
- Laprise F, Dodson J (1994) Environmental variability as a factor controlling spatial patterns in distribution and species diversity of zooplankton in the St. Lawrence estuary. Mar Ecol Prog Ser 107:67–81. <https://doi.org/10.3354/meps107067>
- Legendre P, Gallagher ED (2001) Ecologically meaningful transformations for ordination of species data. Oecologia 129:271–280. <https://doi.org/10.1007/s004420100716>
- Lurgi M, Galiana N, Broitman BR et al (2020) Geographical variation of multiplex ecological networks in marine intertidal communities. Ecology 101:e03165. <https://doi.org/10.1002/ecy.3165>
- Maechler M, Rousseeuw P, Struyf A et al (2022) cluster: cluster analysis basics and extensions. R package version 2.1.3. <https://cran.r-project.org/web/packages/cluster/cluster.pdf>
- Mangialajo L, Chiantore M, Cattaneo-Viotti R (2008) Loss of fucoidal algae along a gradient of urbanisation, and structure of benthic assemblages. Mar Ecol Prog Ser 358:63–74. <https://doi.org/10.3354/meps07400>
- Marshall JC, Adcroft A, Hill C et al (1997) A finite-volume, incompressible Navier Stokes model for studies of the ocean on parallel computers. J Geophys Res Oceans 102:5753–5766. <https://doi.org/10.1029/96JC02775>
- Melli V, Angiolillo M, Ronchi F et al (2017) The first assessment of marine debris in a site of Community Importance in the north-western Adriatic Sea (Mediterranean Sea). Mar Pollut Bull 114:821–830. <https://doi.org/10.1016/j.marpolbul.2016.11.012>
- Miotti C, Cecchin E, Curiel D et al (2014) Variazioni nelle comunità macrozoobentoniche di affioramenti rocciosi (Tegnùe) del litorale Veneto lungo un gradiente costa-mare. Boll Mus St Nat Venezia 65:47–65. [http://www.studioemilianomolin.it/biblio/Boll65\\_03\\_Miotti\\_et\\_al.pdf](http://www.studioemilianomolin.it/biblio/Boll65_03_Miotti_et_al.pdf)
- Molin E, Gabriele M, Brunetti R (2003) Further news on hard substrate communities of the northern Adriatic Sea with data on growth and reproduction in *Polycitor adriaticus* (von Drasche, 1883). Boll Mus Civ Stor Nat Venezia 54:19–28. [https://www.researchgate.net/profile/Emiliano-Molin/publication/279531470\\_Further\\_news\\_on\\_hard\\_substrate\\_communities\\_of\\_the\\_northern\\_Adratic\\_Sea\\_with\\_data\\_on\\_growth\\_and\\_reproduction\\_in\\_Polycitor\\_adriaticus\\_Von\\_Drasche\\_1883/links/55957bc608ae5d8f3930f596/Further-news-on-hard-substrate-communities-of-the-northern-Adriatic-Sea-with-data-on-growth-and-reproduction-in-Polycitor-adriaticus-Von-Drasche-1883.pdf](https://www.researchgate.net/profile/Emiliano-Molin/publication/279531470_Further_news_on_hard_substrate_communities_of_the_northern_Adratic_Sea_with_data_on_growth_and_reproduction_in_Polycitor_adriaticus_Von_Drasche_1883/links/55957bc608ae5d8f3930f596/Further-news-on-hard-substrate-communities-of-the-northern-Adriatic-Sea-with-data-on-growth-and-reproduction-in-Polycitor-adriaticus-Von-Drasche-1883.pdf)
- Molin E, Pessa G, Rismondo A (2010) Comunità macrozoobentonica di substrato solido. In: Agenzia Regionale per la Prevenzione e protezione Ambientale del Veneto-ARPAV (ed) Le tegnùe dell'alto Adriatico: valorizzazione della risorsa marina attraverso lo studio di aree di pregio ambientale. ARPAV, Venice, pp 52–61. [http://www.studioemilianomolin.it/biblio/pubbl.LE%20TEGNUE%20ALTO%20ADRIATICO\\_SOLIDO.pdf](http://www.studioemilianomolin.it/biblio/pubbl.LE%20TEGNUE%20ALTO%20ADRIATICO_SOLIDO.pdf)
- Montefalcone M, Morri C, Bianchi CN et al (2017) The two facets of species sensitivity: stress and disturbance on coralligenous assemblages in space and time. Mar Pollut Bull 117:229–238. <https://doi.org/10.1016/j.marpolbul.2017.01.072>

- Moschino V, Riccato F, Fiorin R et al (2019) Is derelict fishing gear impacting the biodiversity of the northern Adriatic Sea? An answer from unique biogenic reefs. *Sci Total Environ* 663:387–399. <https://doi.org/10.1016/j.scitotenv.2019.01.363>
- Naranjo SA, Carballo JL, Garcia-Gomez JC (1996) Effects of environmental stress on ascidian populations in Algeciras Bay (southern Spain). Possible marine bioindicators? *Mar Ecol Prog Ser* 144:119–131. <https://doi.org/10.3354/meps144119>
- Nesto N, Simonini R, Riccato F et al (2020) Macro-zoobenthic biodiversity of northern Adriatic hard substrates: ecological insights from a bibliographic survey. *J Sea Res* 160–161:101903. <https://doi.org/10.1016/j.seares.2020.101903>
- Nicoletti L, Paganelli D, Targusi M et al (2015) Monitoraggio ambientale dei depositi sabbiosi offshore. La risorsa sabbia offshore per il ripascimento costiero. ISMAR-CRN, 28 April 2015, Bologna, Italy. [http://www.ismar.cnr.it/file/news-e-eventi/2015/2\\_GDB%20Bologna%2028\\_04\\_15%2027\\_4\\_web\\_2.pdf](http://www.ismar.cnr.it/file/news-e-eventi/2015/2_GDB%20Bologna%2028_04_15%2027_4_web_2.pdf)
- Oksanen J, Blanchet FG, Friendly M et al (2016) vegan: community ecology package. R package version 2.4-3. Vienna R Found Stat Comput Sch. <https://cran.r-project.org/web/packages/vegan/vegan.pdf>
- Olivi G (1792) *Zoologia Adriatica*, Reale Accademia Sc. Lett Arti Bassano 334
- Pansch C, Scotti M, Barboza FR et al (2018) Heat waves and their significance for a temperate benthic community: a near-natural experimental approach. *Glob Change Biol* 24:4357–4367. <https://doi.org/10.1111/gcb.14282>
- Piazzi L, Gennaro P, Balata D (2011) Effects of nutrient enrichment on macroalgal coralligenous assemblages. *Mar Pollut Bull* 62:1830–1835. <https://doi.org/10.1016/j.marpolbul.2011.05.004>
- Piazzi L, Gennaro P, Balata D (2012) Threats to macroalgal coralligenous assemblages in the Mediterranean Sea. *Mar Pollut Bull* 64:2623–2629. <https://doi.org/10.1016/j.marpolbul.2012.07.027>
- Piazzi L, Kaleb S, Ceccherelli G et al (2019) Deep coralligenous outcrops of the apulian continental shelf: biodiversity and spatial variability of sediment-regulated assemblages. *Cont Shelf Res* 172:50–56. <https://doi.org/10.1016/j.csr.2018.11.008>
- Piazzi L, Turicchia E, Rindi F et al (2023) *NAMBER*: a biotic index for assessing the ecological quality of mesophotic biogenic reefs in the northern Adriatic Sea. *Aquat Conserv* 33:298–311. <https://doi.org/10.1002/aqc.3922>
- Pinedo S, Ballesteros E (2019) The role of competitor, stress-tolerant and opportunist species in the development of indexes based on rocky shore assemblages for the assessment of ecological status. *Ecol Indic* 107:105556. <https://doi.org/10.1016/j.ecolind.2019.105556>
- Plotkin A, Gerasimova E, Rapp HT (2011) Phylogenetic reconstruction of Polymastiidae (Demospongiae: Hadromerida) based on morphology. *Hydrobiologia* 687:21–41. <https://doi.org/10.1007/s10750-011-0823-0>
- Ponti M (2020a) Single-beam bathymetry data (ESRI ASCII grid format) of selected mesophotic biogenic reefs from the northern Adriatic Sea. <https://doi.org/10.26022/ieda/329803>. Integrated Earth Data Applications (IEDA)
- Ponti M (2020b) Single-beam bathymetry data (GeoTIFF image format) of selected mesophotic biogenic reefs from the northern Adriatic Sea. <https://doi.org/10.26022/ieda/329814>. Integrated Earth Data Applications (IEDA)
- Ponti M, Mastrotoaro F (2006) Distribuzione dei popolamenti ad ascidie sui fondali rocciosi (Tegnùe) al largo di Chioggia (Venezia). *Biol Mar Mediterr* 13:621–624. [https://www.tegnue.it/2005%20sibm%20\(poster\)%20ponti%20mastrotoaro.pdf](https://www.tegnue.it/2005%20sibm%20(poster)%20ponti%20mastrotoaro.pdf)
- Ponti M, Fava F, Abbiati M (2011) Spatial–temporal variability of epibenthic assemblages on subtidal biogenic reefs in the northern Adriatic Sea. *Mar Biol* 158:1447–1459. <https://doi.org/10.1007/s00227-011-1661-3>
- Ponti M, Turicchia E, Ferro F et al (2018) The understorey of gorgonian forests in mesophotic temperate reefs. *Aquat Conserv Mar Freshw Ecosyst* 28:1153–1166. <https://doi.org/10.1002/aqc.2928>
- Ponti M, Linares C, Cerrano C et al (2021) Editorial: biogenic reefs at risk: facing globally widespread local threats and their interaction with climate change. *Front Mar Sci* 8:793038. <https://doi.org/10.3389/fmars.2021.793038>
- Poulain PM, Kourafalou VH, Cushman-Roisin B (2001) Northern Adriatic Sea. In: Cushman-Roisin B, Gačić M, Poulain PM, Artegiani A (eds) *Physical oceanography of the Adriatic Sea: past, present and future*. Springer Netherlands, Dordrecht, pp 143–165. ISBN 978-94-015-9819-4. <https://doi.org/10.1007/978-94-015-9819-4>
- Pourmozaffar S, Tamadoni Jahromi S, Rameshi H et al (2020) The role of salinity in physiological responses of bivalves. *Rev Aquac* 12:1548–1566. <https://doi.org/10.1111/raq.12397>
- Pranovi F, Raicevich S, Franceschini G et al (2000) Rapido trawling in the northern Adriatic Sea: effects on benthic communities in an experimental area. *ICES J Mar Sci* 57:517–524. <https://doi.org/10.1006/jmsc.2000.0708>

- Quimpo TJR, Ligson CA, Manogan DP et al (2020) Fish farm effluents alter reef benthic assemblages and reduce coral settlement. *Mar Pollut Bull* 153:111025. <https://doi.org/10.1016/j.marpolbul.2020.111025>
- Rattray A, Andrello M, Asnaghi V et al (2016) Geographic distance, water circulation and environmental conditions shape the biodiversity of Mediterranean rocky coasts. *Mar Ecol Prog Ser* 553:1–11. <https://doi.org/10.3354/meps11783>
- Shabtay A, Portman ME, Manea E, Gissi E (2019) Promoting ancillary conservation through marine spatial planning. *Sci Total Environ* 651:1753–1763. <https://doi.org/10.1016/j.scitotenv.2018.10.074>
- Silva CNS, Murphy NP, Bell JJ et al (2021) Global drivers of recent diversification in a marine species complex. *Mol Ecol* 30:1223–1236. <https://doi.org/10.1111/mec.15780>
- Silvestri C, Bruschi A, Calace N et al (2020) CADEAU project - final report. Figshare. <https://doi.org/10.6084/m9.figshare.12666905.v1>
- Solan M, Whiteley N (2016) Stressors in the marine environment: physiological and ecological responses; societal implications. Oxford University Press. ISBN 0-19-102888-6. <https://doi.org/10.1093/acprof:oso/9780198718826.001.0001>
- Solidoro C, Bastianini M, Bandelj V et al (2009) Current state, scales of variability, and trends of biogeochemical properties in the northern Adriatic Sea. *J Geophys Res Oceans* 114(C7). <https://doi.org/10.1029/2008JC004838>
- Spagnoli F, Dinelli E, Giordano P et al (2014) Sedimentological, biogeochemical and mineralogical facies of northern and central western Adriatic Sea. *J Mar Syst* 139:183–203. <https://doi.org/10.1016/j.jmarsys.2014.05.021>
- Stefanon A (1970) The role of beachrock in the study of the evolution of the North Adriatic Sea. *Mem Biogeogr Adriat* 8:79–99
- Stefanon A, Zuppi GM (2000) Recent carbonate rock formation in the northern Adriatic Sea: hydrogeological and geotechnical implications. *Hydrogéologie Orléans* 3–10
- Strain EMA, Thomson RJ, Micheli F et al (2014) Identifying the interacting roles of stressors in driving the global loss of canopy-forming to mat-forming algae in marine ecosystems. *Glob Change Biol* 20:3300–3312. <https://doi.org/10.1111/gcb.12619>
- Teixidó N, Casas E, Cebrián E et al (2013) Impacts on coralligenous outcrop biodiversity of a dramatic coastal storm. *PLoS ONE* 8:e53742. <https://doi.org/10.1371/journal.pone.0053742>
- Tonin S (2018) Economic value of marine biodiversity improvement in coralligenous habitats. *Ecol Indic* 85:1121–1132. <https://doi.org/10.1016/j.ecolind.2017.11.017>
- Tosi L, Zecchin M, Franchi F et al (2017) Paleochannel and beach-bar palimpsest topography as initial substrate for coralligenous buildups offshore Venice, Italy. *Sci Rep* 7:1321. <https://doi.org/10.1038/s41598-017-01483-z>
- Tribot A-S, Mouquet N, Villéger S et al (2016) Taxonomic and functional diversity increase the aesthetic value of coralligenous reefs. *Sci Rep* 6:34229. <https://doi.org/10.1038/srep34229>
- Trincardi F, Correggiari A, Roveri M (1994) Late quaternary transgressive erosion and deposition in a modern epicontinental shelf: the Adriatic semienclosed basin. *Geo-Mar Lett* 14:41–51. <https://doi.org/10.1007/BF01204470>
- Trygonis V, Sini M (2012) photoQuad: a dedicated seabed image processing software, and a comparative error analysis of four photoquadrat methods. *J Exp Mar Biol Ecol* 424–425:99–108. <https://doi.org/10.1016/j.jembe.2012.04.018>
- Turicchia E, Cerrano C, Ghetta M et al (2021) *MedSens* index: the bridge between marine citizen science and coastal management. *Ecol Indic* 122:107296. <https://doi.org/10.1016/j.ecolind.2020.107296>
- Turicchia E, Abbiati M, Bettuzzi M et al (2022) Bioconstruction and bioerosion in the northern Adriatic coralligenous reefs quantified by x-ray computed tomography. *Front Mar Sci* 8:790869. <https://doi.org/10.3389/fmars.2021.790869>
- UNEP-MAP-RAC/SPA (2008) Action plan for the conservation of the coralligenous and other calcareous bioconcretions in the Mediterranean Sea. RAC/SPA, Tunis. [https://www.rac-spa.org/sites/default/files/action\\_plans/pa\\_coral\\_en.pdf](https://www.rac-spa.org/sites/default/files/action_plans/pa_coral_en.pdf)
- van den Wollenberg AL (1977) Redundancy analysis an alternative for canonical correlation analysis. *Psychometrika* 42:207–219. <https://doi.org/10.1007/BF02294050>
- von Lendenfeld R (1896) Die Clavulina der Adria. *Nova acta. Academiae Caesareae Leopoldino-Carolinae Germanicae Naturae Curiosorum* 69:1–251 pls I–XII
- Yang Z, Liu X, Zhou M et al (2015) The effect of environmental heterogeneity on species richness depends on community position along the environmental gradient. *Sci Rep* 5:15723. <https://doi.org/10.1038/srep15723>
- Zunino S, Canu DM, Zupo V, Solidoro C (2019) Direct and indirect impacts of marine acidification on the ecosystem services provided by coralligenous reefs and seagrass systems. *Glob Ecol Conserv* 18:e00625. <https://doi.org/10.1016/j.gecco.2019.e00625>

Zunino S, Libralato S, Melaku Canu D et al (2021) Impact of ocean acidification on ecosystem functioning and services in habitat-forming species and marine ecosystems. *Ecosystems* 24:1561–1575. <https://doi.org/10.1007/s10021-021-00601-3>

**Publisher's Note** Springer Nature remains neutral with regard to jurisdictional claims in published maps and institutional affiliations.

Springer Nature or its licensor (e.g. a society or other partner) holds exclusive rights to this article under a publishing agreement with the author(s) or other rightsholder(s); author self-archiving of the accepted manuscript version of this article is solely governed by the terms of such publishing agreement and applicable law.

## Authors and Affiliations

**Fabrizio Gianni**<sup>1,2</sup> · **Eva Turicchia**<sup>3,4,5</sup> · **Marco Abbiati**<sup>4,5,6</sup> · **Barbara Calcinaï**<sup>7</sup> · **Annalisa Caragnano**<sup>7</sup> · **Saul Ciriaco**<sup>8</sup> · **Federica Costantini**<sup>3,4,5</sup> · **Sara Kaleb**<sup>9</sup> · **Luigi Piazzì**<sup>10</sup> · **Stefania Puce**<sup>7</sup> · **Stefano Querin**<sup>1</sup> · **Fabio Rindi**<sup>7</sup> · **Cosimo Solidoro**<sup>1</sup> · **Vinko Bandelj**<sup>1,2</sup> · **Massimo Ponti**<sup>3,4,5</sup> · **Annalisa Falace**<sup>5,9</sup>

---

✉ Fabrizio Gianni  
fgianni@ogs.it

✉ Eva Turicchia  
eva.turicchia2@unibo.it

<sup>1</sup> National Institute of Oceanography and Applied Geophysics – OGS, Trieste, Italy

<sup>2</sup> National Biodiversity Future Center – NBFC, Palermo, Italy

<sup>3</sup> Department of Biological, Geological and Environmental Sciences (BiGeA), University of Bologna, Ravenna, Italy

<sup>4</sup> Interdepartmental Research Centre for Environmental Sciences (CIRSA) and Interdepartmental Center for Industrial Research Renewable Sources, Environment, Sea and Energy (CIRI-FRAME), University of Bologna, Ravenna, Italy

<sup>5</sup> National Inter-University Consortium for Marine Sciences (CoNISMa), Roma, Italy

<sup>6</sup> Department of Cultural Heritage (DBC), University of Bologna, Ravenna, Italy

<sup>7</sup> Department of Life and Environmental Sciences, Polytechnic University of Marche, Ancona, Italy

<sup>8</sup> WWF Miramare MPA, Trieste, Italy

<sup>9</sup> Department of Life Sciences, University of Trieste, Trieste, Italy

<sup>10</sup> Department of Chemistry and Pharmacy, University of Sassari, Sassari, Italy